



HUNTLEY
PARK DISTRICT
Recreation for Generations

FALL 2019

Registration begins

Monday, August 5



Preschool 2019-2020

Basketball Programs

Extended Time Program



9/1 - 9/30
HUNTLEY
STEP-
TENBER
CHALLENGE

STEP
COUNT
WIN

REGISTER FOR
FREE TODAY

www.HuntleyParks.org

HOLIDAY CLOSURES

LABOR DAY: September 2
THANKSGIVING: November 28, 29
CHRISTMAS HOLIDAY:
 December 24-25
NEW YEAR'S HOLIDAY:
 December 31-January 1

REC CENTER

12015 MILL ST. HUNTLEY
 Phone: 847-669-3180
 Fax: 847-669-2836
 Rainout Line: 847-580-1275
 HuntleyParks.org
 @HuntleyParks

Registration Office Hours of Operation

Monday - Friday 7:00am - 7:30pm
 Saturday 8:00am - 1:00pm
 Sunday Closed

STINGRAY BAY FAMILY AQUATIC CENTER

12219 LOIS LN. HUNTLEY
 Phone: 847-515-7665 (POOL)
 Rainout Line: 847-580-1275
 HuntleyParks.org
 @StingrayBayHPD

*Open Swim

Monday - Thursday 11:15am - 7:00pm
 Friday 11:15am - 8:00pm
 Saturday & Sunday 12:15am - 7:00pm

** Season Pass holders may enter
 15 minutes earlier that published
 times above.*

Open Memorial Day Weekend through Mid-August, check online for exception
 dates and special event dates.

FITNESS CENTER

12015 MILL ST. HUNTLEY
 Phone: 847-669-3180 ext.390
 @HPDFitness

Monday - Thursday 5:30am - 9:00pm
 Friday 5:30am - 7:30pm
 Saturday 7:00am - 1:00pm
 Sunday 7:00am - 1:00pm

SEEDLINGS PRESCHOOL

12015 MILL ST. HUNTLEY
 Phone: 847-669-0597

Days

Monday - Friday 9:00am - 11:30pm
 12:15pm - 2:45pm

Night Owl

Tuesday & Thursday 6:00pm - 7:30pm

PINECREST GOLF CLUB

11220 W ALGONQUIN RD. HUNTLEY
 Phone: 847-669-3111
 @PinecrestGolf

Hours vary seasonally, please
 contact for more information

GENERAL INFORMATION

How to Register Online	2
Staff Directory	3
General Information	4

ACTIVITIES

Adult	28
Birthday Parties	27
Cheer and Pom	13
Early Childhood	8
Extended Time Program	6
Fitness	19
General Youth Programs	12
Golf/Outings/Banquets	32
Hayrides	27
Martial Arts	26
One-Day Activities and Events	9
Performing Arts	24
Preschool	5
Sports	14

PARKS & FACILITIES

Park Directory & Map	30
Park Rules and Regulations	31
Picnic Shelter Reservations	27
REC Center Rental Information	27
Weather Information	31



USE THE GUIDE FIND YOUR FUN

HOW TO REGISTER ONLINE

Fall Registration Begins August 5
Extended Time Registration is ongoing
Preschool Registration is ongoing

How to register:

- Step 1:** Visit huntleyparks.org and select "Registration"
- Step 2:** New to programs? [Create an account](#). Returning to programs? [Log In](#).
- Step 3:** Use activity name and/or activity number to submit to activity search criteria. You can also search by activity type or sub-type to narrow your search results.
- Step 4:** Click the green + icon next to your program of choice. Then add to cart at the bottom of page.
- Step 5:** Fill out program information and select correct household participant. To add a new participant or if you need your login information reset call our customer service team 847-669-3180.
- Step 6:** Submit credit card information to complete transaction. All registration receipts will be sent via email.

HP HUNTLEY PARK DISTRICT
Recreation for generations

Home Activity Search Facility Search Contact US Event Calendar

Registration

Member Login

Username:

Password:

[Sign In](#) [Reset](#)

[Need an account? Click Here](#)

[Forgot your password? Click Here](#)

Quick Links

[Browse Activities](#) [Create an Account](#)

[Program Brochure](#) [Contact our Office](#)

Activity Types

- Adult
- Aquatics
- Cheer and Pom
- Day Camp
- Early Childhood
- Extended Time Program
- Fitness
- General Youth Programs
- Golf
- Gymnastics
- Martial Arts
- Performing Arts
- Preschool
- Special Events
- Sports

Guest Information

Welcome to the Huntley Park District Activity registration site. You may view our activities as a guest and when you are ready to register, please login to your account to complete your transaction.

When a transaction is made, you will receive an email confirming your purchase with an attached PDF receipt. Please read your receipt as there may be additional information about your respective activity such as what to bring to the first class, important activity related dates (picture days, parent meetings, coaches meetings, etc.), where to park or to enter a facility, or rules, etc.

If you have never registered with us before, create an account for your family by:

- Click on the "create an account" link
- Complete the household information form and click "Finish"
- Complete the family member information form and click "Done" to submit your request for an account.
- Once you have created your account you may start shopping

ADMINISTRATION

Thom Palmer, CPRP
Executive Director
 tpalmer@huntleyparks.org

RECREATION

Scott M. Crowe, CPRE
Recreation Director
 scrowe@huntleyparks.org

Ryan Coffland, CPRP
Athletic Manager
 rcoffland@huntleyparks.org

Meredith Johnson
Recreation Supervisor
 meredith@huntleyparks.org

Connie Lombard
Preschool Director
 clombard@huntleyparks.org

Heather Matteson
Youth Recreation Manager
 heather@huntleyparks.org

Chris Pacana
Athletic Coordinator
 cpacana@huntleyparks.org

Stephanie Peters
Program & Aquatic Supervisor
 speters@huntleyparks.org

Matt Szytz
Fitness & Marketing Manager
 matt@huntleyparks.org

FINANCE

Laura Pisarcik
Finance Director
 laura@huntleyparks.org

Anne Zanella
Accounting Manager
 anne@huntleyparks.org

Staci Fletter
Registration & Facility Supervisor
 staci@huntleyparks.org

Nancy Sprouse
HR & Risk Manager
 nancy@huntleyparks.org

PARKS & FACILITIES

Paul Ostrander
Parks & Facilities Director
 postrander@huntleyparks.org

Bob Tures
Facilities Manager
 rtures@huntleyparks.org

PINECREST GOLF CLUB

Rick Walrath
General Manager
 pinecrestgm@huntleyparks.org

Kurtis Hartwig
Golf Professional
 pinecrestpro@huntleyparks.org

Tony Miranda
Superintendent of Grounds
 pinecrestgrounds@huntleyparks.org

Patty Ruggerio
Banquet & Event Manager
 pinecrestevents@huntleyparks.org

CPRP = Certified Parks and Recreation Professional

CPRE = Certified Parks and Recreation Executive

BOARD OF COMMISSIONERS

The Huntley Park District Board of Commissioners are volunteers and elected by you the Huntley Park District residents. Board meetings are typically held on the fourth Wednesday of the month at 7:00pm at the Rec Center. If you wish to reach our board of commissioners, you can contact them at board@huntleyparks.org.

Jerry Nepermann
President

Keith Wold
Treasurer/Vice-President

Dr. William Awe
Commissioner

Jim Blasky
Commissioner

Melissa Kellas
Commissioner

Mission Statement

The Huntley Park District is committed to providing accessible parks, programs, open space and facilities for healthy activities, creative expression and learning opportunities in order to enhance the quality of life for district residents and visitors.

Huntley Park District Residents

You are a resident of the Huntley Park District if you pay taxes to the Huntley Park District and reside in our boundaries. A utility bill will constitute proof of residency.

Photos and Video

Photos and video footage are periodically taken of people participating in Park District activities, attending a class or event, or using District facilities or property. Please be aware that by registering for an activity, participating in an activity, attending an event, or using District facilities or property, you authorize the District to use these photos and video footage for promotional purposes in District publications, advertising, marketing materials, brochures, event flyers, social media, and the District's website without additional prior notice or permission and without any compensation to you. All photos and videos are property of the District.

Register Early

Please do not hesitate in registering for activities! Doing so may result in the class you want filling early or being cancelled due to low enrollment. As a general rule, most classes must have the minimum met 7 days before the activity starts. Please register as soon as you can to ensure your class(es) are available for you.

Cancellation of Programs

From time to time activities must be cancelled due to low enrollment, change of availability from instructor, or many other reasons. In the event an activity is cancelled you will receive a full refund of any fees paid.

Waiting List

Many of our activities fill up fast and become full. In certain programs we may be able to add additional people, instructors, or times to fill the need and in other instances we simply can't due to capacity limitations. Being placed on a waiting list is not a guarantee that you will get into any activity. If the activity you are registering for is one out of necessity (such as ET or Day Camp) and you find yourself on the waiting list, we encourage you to seek other arrangements. If you are put on a waiting list you will be contacted only if a spot becomes available.

Refunds/Cancellations

General activity refunds, less a service charge of \$10, will be made if a request is received at least seven days before the start of the activity. After that, refunds can only be given for medical reasons, and may be prorated. When the Park District reschedules or cancels an activity due to insufficient registration, full refunds will be given. Refunds will be returned to the original method of payment or the refund may be applied as a household credit for future enrollments.

Other pre-registration fees/deposits for day camp, preschool, ET are non-refundable.

Non-Payment of Fees

Transactions which require future billing such as day camp, preschool, ET, or fitness memberships may incur a \$25 fee for each occurrence if payments are declined, including but not limited to checks, credit cards and debit cards. Participation in current and future activities may be suspended due to insufficient payments so please ensure the payment method you are using is accurate.

Huntley Park Foundation

The Huntley Park Foundation distributes funds to support recreational programs and park projects for the Huntley Park District. Generous financial support can buy a beautiful park bench or even a picnic shelter. Dollars are earmarked for specific projects or given to the general foundation fund. The Huntley Parks Foundation is a 501c3 corporation. For additional information please contact Thom Palmer, Executive Director, Huntley Park District at (847) 669-5683 or tpalmer@huntleyparks.org.

Code of Conduct and Participant Discipline

While participating in activities at the Huntley Park District we ask that all customers please follow these guidelines:

1. Show respect to all participants and staff.
2. Refrain from use of foul language.
3. Show respect for equipment and facilities.
4. Dress appropriately for activities

The Huntley Park District will use a positive approach regarding discipline. The purpose of discipline is to help a child develop self-control and learn to assume responsibility for his or her own actions. We use positive statements and reinforcements to redirect negative behavior. Should a child need more than that, a "time-out" period may be initiated. We will handle disruptive behavior as follows:

1. The parent/guardian will be informed of the specific behavior. Documentation will be given to the parent and a copy will be kept in the child's file.
2. If the behavior continues, the instructor will inform parents a second time.
3. If there is no change in behavior, your child may be dismissed from the activity. Each situation will be evaluated on its own merit.

Disruptive behavior may be any behavior that causes, or could lead to, personal injury of your child or others. Examples include hitting, kicking, throwing things, defying or running away, or any behavior that disrupts the normal activity climate. Disruptive behavior, in the broad sense, is any behavior that takes an instructor away from the rest of the class for long periods of time. The Huntley Park District reserves the right to remove a participant whose behavior endangers the safety of themselves and others.

Americans with Disabilities Act

The Huntley Park District continues to update facilities and parks as well as review program procedures to comply with the American with Disabilities Act (ADA) of 1990. Please indicate on the registration form of any special needs that require accommodation. We require a two week notice prior to the start of a program to ensure reasonable accommodations can be made. All participants must be toilet trained unless it is a parent/child class. If diapers or incontinent aids are used, the participant or parent must be able to provide personal care.

Northern Illinois Special Recreation Association

Since 1976, NISRA has provided recreation programs for people with disabilities, and its mission is: enriching the lives of people with disabilities through meaningful recreation experiences. Socializing, building physical skills, learning, relaxation and fun are some of the benefits gained from participating in NISRA's year-round activities.

NISRA staff assist Huntley Park District staff with including residents with disabilities in our recreation programs. Call NISRA at (815) 459-0737 with questions about inclusion. Ask for the NISRA brochure at our office or visit NISRA's web site at www.nisra.org.



General Information

Since 1983, Seedlings Preschool has remained committed to providing children a safe environment in which they develop essential skills that will serve as a cornerstone for lifelong learning. Seedlings Preschool is geared to help children gain confidence through planned activities to enhance their social, emotional and cognitive development. Our developmentally designed curriculum encourages learning without stifling their ability to create and investigate. Seven large classrooms are housed in the REC Center, each with its own child-friendly bathroom. To ensure your child's safety, the preschool wing is secured while class is being held.

Miss Connie's Playground is a big hit with the children and is equipped with age appropriate equipment to provide active play for your growing preschoolers. In addition, an indoor play structure and equipment allows children to be active and release some energy even during the winter months.

Prices listed are monthly fees in which the first month is paid with this online transaction plus a one-time registration fee. The remaining 8 monthly payments are done each month starting on September 15, 2019.

3 Year-old Preschool

REC Center, Magnolia Room - Activity #5651010

Seedlings 3 Year-old Preschool class is the best place for children to learn and explore in a safe and fun way. Activities include music, art, and large motor activities including recess time on our playground or in the indoor large motor area. Socialization and play are both part of early learning fun for three year-olds. Our "Letter People Program," a puppet based program, helps introduce the letters. (CL)

SECTION	AGE	DAY	DATE(S)	TIME	FEE R/NR
01	3	Tu&Th	Sept. 3 - May 21	9:00-11:30a	\$149/\$169
02	3	Tu&Th	Sept. 3 - May 21	9:00-11:30a	\$149/\$169
03	3	M,W,F	Sept. 4 - May 22	9:00-11:30a	\$170/\$190
04	3	M-Th	Sept. 3 - May 21	9:00-11:30a	\$196/\$216

4 Year-old Preschool

REC Center, Spruce Room - Activity #5652010

Seedlings Preschool classes for 4 year-olds will expand on skills developed in 3 year-old preschool. Participating in our phonics/letter program will help the children not only recognize letters but learn the sounds of each letter. Children will work on writing their names and participate in hands-on math activities. Students will work on school readiness skills such as listening and following directions. Play-based learning is part of the program along with large motor fun in the gym or in our secure Preschool playground. Section 2 of this class does not have a one-time registration fee and you must already be enrolled in section 01. (CL)

SECTION	AGE	DAY	DATE(S)	TIME	FEE R/NR
01	4	Tu&Th	Sept. 3 - May 21	9:00-11:30a	\$149/\$169
02	4	W	Sept. 4 - May 20	9:00-11:30a	\$21/\$31
03	4	M,W,F	Sept. 4 - May 22	9:00-11:30a	\$170/\$190
04	4	M-Th	Sept. 3 - May 21	9:00-11:30a	\$196/\$216
05	4	M-Th	Sept. 3 - May 21	9:00-11:30a	\$196/\$216

Mixed-Age Preschool

REC Center, Birch Room - Activity #5653010

This class will offer all the areas of learning and fun as our regular preschool classes, while allowing students to interact with their younger or older peers in unique ways. Multi-age Preschool provides older children the opportunity to learn leadership skills as they help the younger children and set examples for them. Younger children will learn problem-solving skills as they work with the older children. Work groups in this class can be smaller as they work on certain skills such as letter activities. (CL)

SECTION	AGE	DAY	DATE(S)	TIME	FEE R/NR
01	3-4	M,W,F	Sept. 4 - May 22	12:15-2:45p	\$170/\$190

Dual Language Preschool

REC Center, Redwood Room - Activity #5654010

The Seedlings Preschool Dual Language class is a unique class that offers all the areas of learning and fun as our Multi-age Preschool Class, while providing an age-appropriate introduction to Spanish. Teachers are fluent in both English and Spanish. Section 2 of this class does not have a one-time registration fee and you must already be enrolled in section 01. (CL)

SECTION	AGE	DAY	DATE(S)	TIME	FEE R/NR
01	3-4	M,W,F	Sept. 4 - May 22	9:00-11:30a	\$170/\$190
02	3-4	Th	Sept. 5 - May 21	9:00-11:30a	\$26/\$36

Night Owl Preschool

REC Center, Birch Room - Activity #5655010

Seedlings Night Owl Preschool is perfect for the child who is unable to attend a daytime class. To be respectful of learning time and bed time, snacks are not usually served and large motor activity time will be condensed. School readiness skills, along with developmentally appropriate art, music and story time is a part of each class. (CL)

SECTION	AGE	DAY	DATE(S)	TIME	FEE R/NR
01	3-4	Tu&Th	Sept. 3 - May 21	6:00-7:30p	\$93/\$113





District 158 Extended Time Program

School District 158 and Huntley Park District work cooperatively to offer the Extended Time program. Extended Time (ET) is a quality supervised recreation program offered at the elementary schools to children who are enrolled in Kindergarten through 5th grade. ET is offered at the Rec Center for Middle School. Activities include homework time, gym games, outdoor play, arts and crafts, and more. An afternoon snack and drink is provided daily. There is a one-time \$55 non-refundable registration fee for each participant. Prices listed are monthly fees and at the time of sign-up, the registration fee of \$55 and the first of nine total monthly payment is due to hold your spot. The remaining 8 monthly payments will be charged on the 15th of each month from September through April 15, 2020. Sibling discounts will be automatically applied and a full list of these amount per child, per activity are listed on our website. **Those wanting less than 5 days must register in person at the Rec Center.** (HM)

Chesak Elementary - Activity #5301000

SECTION	GRADE	DAY	DATE(S)	TIME	FEE
51	K-2	M-F	Aug. 14 - June 1	6:30-8:30a	\$242
52	K-2	M-F	Aug. 14 - June 1	3:00-6:00p	\$285
53	K-2	M-F	Aug. 14 - June 1	6:30a-6:00p	\$393

Conley Elementary - Activity #5302000

SECTION	GRADE	DAY	DATE(S)	TIME	FEE
51	3-5	M-F	Aug. 14 - June 1	6:30-8:30a	\$242
52	3-5	M-F	Aug. 14 - June 1	3:00-6:00p	\$285
53	3-5	M-F	Aug. 14 - June 1	6:30a-6:00p	\$393

Mackeben Elementary - Activity #5303000

SECTION	GRADE	DAY	DATE(S)	TIME	FEE
51	K-2	M-F	Aug. 14 - June 1	6:30-8:30a	\$242
52	K-2	M-F	Aug. 14 - June 1	3:00-6:00p	\$285
53	K-2	M-F	Aug. 14 - June 1	6:30a-6:00p	\$393

Martin Elementary - Activity #5304000

SECTION	GRADE	DAY	DATE(S)	TIME	FEE
51	3-5	M-F	Aug. 14 - June 1	6:30-8:30a	\$242
52	3-5	M-F	Aug. 14 - June 1	3:00-6:00p	\$285
53	3-5	M-F	Aug. 14 - June 1	6:30a-6:00p	\$393

Leggee Elementary - Activity #5305000

SECTION	GRADE	DAY	DATE(S)	TIME	FEE
51	K-5	M-F	Aug. 14 - June 1	6:30-8:30a	\$242
52	K-5	M-F	Aug. 14 - June 1	3:00-6:00p	\$285
53	K-5	M-F	Aug. 14 - June 1	6:30a-6:00p	\$393

After School Club for Heinemann and Marlowe

Huntley Park District has partnering with District 158 to offer an afterschool program for middle school students. This program will provide a safe and fun environment including homework time, gym/outdoor games, team building/leadership activities and community service projects. **Those wanting less than 5 days of ET program must register in person at the Rec Center.** (HM)

Marlowe Middle School - Activity #5306000

SECTION	GRADE	DAY	DATE(S)	TIME	FEE
52	6-8	M-F	Aug. 14 - June 1	2:30-6:00p	\$285

Heinemann Middle School - Activity #5307000

SECTION	GRADE	DAY	DATE(S)	TIME	FEE
52	6-8	M-F	Aug. 14 - June 1	2:30-6:30p	\$285

Extended Time Punch Pass 2019-2020

10-day Punch Pass are available at each ET school site. Passes may be used for either the AM, PM or AM & PM Extended Time on regular school days. There is a one-time registration fee of \$55. Once registered you must inform the Extended Time Recreation Supervisor, ET Site Supervisor and child's school at least 24 hours prior to program attendance. Passes are non-refundable and non-transferable. Passes expire on the last day the current school year. There is a limit of 10 Punch Pass participants per site. Parents will be notified when their Punch Pass has been fully redeemed. All fees must be paid along with a completed Extended Time registration form before using.

Fee: \$206 per pass (10 days)

- Valid on days school is in session, 6:30am – school start time and/or after school to 6:30pm.
- One punch on the card will be used per day, per child



4 DAYS A WEEK	FIRST CHILD	SECOND CHILD
AM Only	\$169/month	\$164/month
PM Only	\$207/month	\$196/month
AM & PM	\$302/month	\$292/month

3 DAYS A WEEK	FIRST CHILD	SECOND CHILD
AM only	\$140/month	\$134/month
PM only	\$166/month	\$155/month
AM & PM	\$242/month	\$231/month

EXTENDED 6:00-6:30pm	FIRST CHILD	SECOND CHILD
5 Days	\$48/month	\$38/month
4 Days	\$37/month	\$32/month
3 Days	\$25/month	\$22/month

Program Hours:

- AM Session: 6:30am to the start of school
- PM Session: after school until 6:00pm
- Extended Session: 6:00-6:30pm for an additional fee.
- There is no E.T. Program on days that School District #158 is not in session. If the school district determines there will be a "late start," AM ET will not be offered. ET will resume that afternoon at its regularly scheduled time.
- Please note that all institute, in-service and holidays are excluded from the monthly ET fees you pay. Payments are determined by total costs **divided equally over 9 months** beginning at time of registration through May. As a reminder, the fees are based on the number of school days each year divided equally.
- All registrants will be charged monthly for their participation in the upcoming month. All billing will be done via Debit, Credit Card, or ACH this year. If you wish to pay in person a monthly payment method is still needed to complete your initial registration but if you choose to pre-pay this each month, you may do so in person, and we will not charge you that month. (Please indicate this to the staff person that is processing)
- During breaks, non-student attendance days, and any other non-school day ET is not in session. Winter Break, Spring Break, and Days Out Activities are optionally available for an additional fee.
- All participants will be sent information to submit participant information including authorized individuals for pick up, medical information, and special needs information via ePact.
- A \$55 non-refundable registration fee and the first month's payment are due at the time of registration.
- If your child will be attending the ET program less than 5 days per week, you must register in person at the Rec Center and indicate which days your child will be attending on the registration form.
- Due to the high demand and limited space, all cancellations and schedule changes will have a \$25 fee.

Please contact Youth Program Manager at heather@huntleyparks.org or 847-515-2965 with any questions.

School's Out Activity

REC Center, Cafeteria - Activity #3308010

The Huntley Park District can help you stay entertained on days that school is not in session. We offer a variety of activities to ensure each participant has a fun and enjoyable experience. A variety of activities are implemented, including: games, sports, movies, field trips, arts and crafts, cooking, and much more. Children need to bring a sack lunch and drink everyday unless otherwise stated. An afternoon snack and beverage will be provided. Registration closes one week prior to program date. Activity information will be posted one week prior. A \$25 fee per day/child will be charged for any cancellations less than one week prior. NO REFUNDS will be given for cancellations made the day of.

SECTION	GRADES	DAY	DATE(S)	TIME	FEE R/NR
01	K-8	F	Sept. 27	6:30a-6:00p	\$50/\$60
02	K-8	M	Oct. 14	6:30a-6:00p	\$50/\$60
03	K-8	M	Nov. 25	6:30a-6:00p	\$50/\$60
04	K-8	Tu	Nov. 26	6:30a-6:00p	\$50/\$60
05	K-8	W	Nov. 27	6:30a-6:00p	\$50/\$60
06	K-8	All 5	Nov. 25 - Nov. 29	6:30a-6:00p	\$225/\$270

Winter Escape Camp

REC Center, Cafeteria - Activity #3308020

Pack your lunches and come to the Huntley Park District to escape the cold. Winter Escape Camp is filled with four fabulous, fantastic days of fun, friendship, on-site special events, field trips and more! Registration closes one week prior to program date. Activity information will be posted one week prior. A \$25 fee per day/child will be charged for any cancellations less than one week prior. NO REFUNDS will be given for cancellations made the day off.

SECTION	GRADE	DAY	DATE(S)	TIME	FEE R/NR
01	K-8	M	Dec. 23	6:30a-6:00p	\$50/\$60
02	K-8	F	Dec. 27	6:30a-6:00p	\$50/\$60
03	K-8	M	Dec. 30	6:30a-6:00p	\$50/\$60
04	K-8	Th	Jan. 2	6:30a-6:00p	\$50/\$60
05	K-8	F	Jan. 3	6:30a-6:00p	\$50/\$60
06	K-8	All 5	Dec. 23 - Jan. 3	6:30a-6:00p	\$225/\$270



LUNCH BUNCH

Watch for postings each month for available Lunch Bunch Programs. Lunch Bunch is a fun activity for those currently enrolled in Seedlings Preschool to spend time with their friends from class, learn how to eat in a group setting to prepare them for elementary school, and participate in additional activities. To allow for the best experience and acquisition of supplies related to each activity, participants are encouraged to register ahead of time. The cost for each activity is \$10 but will increase to \$12 the day of the class. Each Lunch Bunch day will have a different theme. (CL)

Sprouts

REC Center, Redwood Room - Activity #3253010

Looking for a great introduction to preschool? Try our Sprouts class! Children and parents will spend time together as they learn new songs and finger plays, listen to stories, participate in arts and crafts activities, play games, enjoy large motor activities on the playground and in our large motor area. This class is a great place for moms and their children to make new friends! Different activities each session. Meets at Rec Center. (CL)

No Class Date(s): 11/26

SECTION	AGE	DAY	DATE(S)	TIME	FEE R/NR
01	2-4	Tu	Sept. 10 - Oct. 1	9:15-10:15a	\$34/\$43
02	2-4	Tu	Oct. 8 - Oct. 29	9:15-10:15a	\$34/\$44
03	2-4	Tu	Nov. 5 - Dec. 3	9:15-10:15a	\$34/\$44

Tot Rock

REC Center, Multipurpose Room - Activity #3252005

Maracas and clackers and tambourines, too; it's musical fun just for you! Tot Rock is a unique music and learning program designed specifically for 1 year olds. Each session focuses on new educational theme that incorporates hand held instruments, play props, sensory integration, coordination exercises, and socialization. Structured and unstructured time is included in each class. sing, dance and play today! www.rockitkids.com. **Thursday classes are at Historic Algonquin Village Hall.** (MJ)

No Class Date(s): 11/26, 10/31, 11/28

SECTION	AGE	DAY	DATE(S)	TIME	FEE R/NR
01	1	Tu	Sept. 10 - Oct. 15	9:30-10:10a	\$56/\$66
02	1	Th	Sept. 12 - Oct. 17	5:15-5:55p	\$56/\$66
03	1	Tu	Oct. 29 - Dec. 10	5:15-5:55p	\$56/\$66
04	1	Th	Oct. 24 - Dec. 12	5:15-5:55p	\$56/\$66



Rock 'N' Kids

REC Center, Multipurpose Room - Activity #3252010

Make it a musical day! Kid Rock is a music and movement program designed to stimulate development through interactive play. Fine and gross motor skills are improved through imagination exercises, and by using rhythm instruments and movement props such as tambourines, maracas, scarves and a parachute. Presented in a structured format, Kid Rock encourages cooperation and following directions. Each session focuses on a new educational theme. Sing, dance and play today! www.rockitkids.com. **Thursday classes are at Historic Algonquin Village Hall.** (MJ)

No Class Date(s): 11/26, 10/31, 11/28

Kid Rock 1

SECTION	AGE	DAY	DATE(S)	TIME	FEE R/NR
01	2	Tu	Sept. 10 - Oct. 15	10:15-10:55a	\$56/\$66
02	2	Th	Sept. 12 - Oct. 17	6:00-6:40p	\$56/\$66
03	2	Tu	Oct. 29 - Dec. 10	10:15-10:55a	\$56/\$66
04	2	Th	Oct. 24 - Dec. 12	6:00-6:40p	\$56/\$66

Kid Rock 2

SECTION	AGE	DAY	DATE(S)	TIME	FEE R/NR
05	3-5	Tu	Sept. 10 - Oct. 15	11:00-11:40a	\$56/\$66
06	3-5	Tu	Oct. 29 - Dec. 10	11:00-11:40a	\$56/\$66





Parents' Night Out

REC Center, South Classroom - Activity #3404020

Drop the kids off and enjoy a night to yourselves! We'll pack this Halloween-themed night with games, music, treats and a craft! Pizza and drink meal included. (MJ)

SECTION	AGE	DAY	DATE(S)	TIME	FEE R/NR
01	5-12	F	Oct. 11	6:00-9:00p	\$12/\$17

Family Campout

Deicke Park, Lakeside Pavilion - Activity #3700050

For one special evening Deicke Park will be transformed into a campground. Bring your family and fishing poles. We will be providing hayrides, campfire stories, night hikes, s'mores and a pancake breakfast. Burgers and hot dog meals will be for sale on site. \$25 for first person/tent and \$5 for each additional person. If registration occurs on the day of the event the fees will be \$26/\$6 (MJ)

SECTION	AGE	DAY	DATE(S)	TIME
01	2-99	F&Sa	Sept. 6	5:00-11:00a

FAMILY

CAMPOUT

FRIDAY, SEPTEMBER 6

DEICKE PARK

CHECK-IN TIME 5-7PM

HAYRIDES

S'MORES

PANCAKE BREAKFAST

STORIES

NIGHT HIKE

Daddy/Daughter Dance

REC Center, Theater - Activity #3700020

Dance the night away while enjoying some snacks, giveaways and coloring! Fees are \$18 per resident couple and \$8 each additional sibling. Non-residents are \$25 per couple and \$11 per each additional sibling. (MJ)

SECTION	AGE	DAY	DATE(S)	TIME
01	1.5-13	F	Nov. 15	6:30-8:00p

Daddy Daughter Dance

Friday, November 15

6:30-8:00pm

Rec Center Theater

Must pre-register. Spots fill quickly.

Candy Bar Bingo

REC Center, Multipurpose Room - Activity #3404090

Bring the whole family out for a fun night of various bingo games and sweet treats! No money is exchanged during Candy Bar Bingo. Each card will cost one regular sized candy bar (no minis). Six to eight bingo games will be played. Light refreshments will be served. Candy bars will also be available for purchase. Pre-registration required, no walk-ins. (HM)

SECTION	AGE	DAY	DATE(S)	TIME	FEE R/NR
01	3-99	Sa	Nov. 16	4:00-5:30p	\$3/\$5

Scarecrow Canvas Art for Fall

REC Center, Magnolia Room - Activity #3404073

Calling all young artists! In this class we are going to paint a fabulous piece of art for fall. Our scarecrows will feature embellishments of leaves. We will listen to a couple of fall stories while the paint dries. All participants will enjoy apple juice and donuts. Please bring a paint shirt. Meets at the REC Center. (CL)

SECTION	AGE	DAY	DATE(S)	TIME	FEE R/NR
01	5-8	Th	Sept. 12	6:00-7:30p	\$15/\$19



Turkey Day Crafts for Kids

REC Center, Multipurpose Room - Activity #3404071

Be sure to join us for some Thanksgiving crafting fun! This is a Parent/Child arts and crafts class where you will make and take... a turkey finger puppet, a candy bar favor, a painted doily turkey, a yummy apple turkey and more!!! A snack will be served. (CL)

SECTION	AGE	DAY	DATE(S)	TIME	FEE R/NR
01	2-6	Th	Nov. 7	5:45-7:15p	\$10/\$15



Candy Corn Bear Arts and Crafts

REC Center, Multipurpose Room - Activity #3404070

A Make and Take arts and crafts activity with Dad! Boys and girls and their dads will make an adorable bear brought to us by Noah's Ark Animal Workshop. As you can imagine, Candy Corn Bear's fur has a candy corn pattern! He is a 15" bear made for cuddling! In addition to making the bear, we will listen to Halloween stories and watch a not too spooky movie or two. And of course there will be snacks and a craft. Please sign up by October 11. Class meets at the REC Center. (CL)

SECTION	AGE	DAY	DATE(S)	TIME	FEE R/NR
01	3-8	F	Oct. 18	6:00-7:30p	\$24/\$30

Youth Magic

REC Center, Willow Room - Activity #3404030

Amaze family and friends with a collection of fascinating and mesmerizing tricks involving cards, ropes, coins, mind reading and more! All materials will be provided and every participant will receive a magic kid of his or her own to take home. Best of all, new tricks will be introduced during each session! (MJ)

SECTION	AGE	DAY	DATE(S)	TIME	FEE R/NR
01	5-12	W	Oct. 23	5:00-5:55p	\$20/\$30
02	5-12	Th	Dec. 12	6:45-7:40p	\$20/\$30



Mom and Me Christmas Crafts and Stories

REC Center, Multipurpose Room - Activity #3404072

To add to the holiday spirit, we are offering a class with lots of seasonal stories and a craft to go with each. Adults and children will craft together. One favorite story that comes to mind is Teddy Bears Trim the Tree. Should we make an ornament? We will throw in some festive music and refreshments, too! Meets at the REC Center. (CL)

SECTION	AGE	DAY	DATE(S)	TIME	FEE R/NR
01	2-4	Tu	Dec. 10	9:30-11:00a	\$12/\$18



“Not So Haunted” Hayride

REC Center, Multipurpose Room - Activity #3251010

The “Not So Haunted” Hayride is a unique hayride experience through Deicke Park for Preschool-Aged Children. We will stop at our very own pumpkin patch and conclude the trip with an arts and crafts activity. Each child will take home a bag containing an apple, a pumpkin, a gourd and their craft project. The “Good Witch” will also be present to read stories to the children while they eat their snack. Fees are only charged for each child, though children must be accompanied by an adult. Meets at the REC Center. (CL)

SECTION	AGE	DAY	DATE(S)	TIME	FEE R/NR
01	2-5	W	Oct. 23	9:30-10:45a	\$10/\$15



Santa’s Workshop

REC Center, Theater - Activity #3700080

Work like lil’ elves to create neat crafts to keep or give away as presents. Parents will work with their child(ren) while following step-by-step instructions. Staff will be on hand to help. Santa, himself, will stop by to check out your work and pose for photos with you during the last half of the night! (MJ)

SECTION	AGE	DAY	DATE(S)	TIME	FEE R/NR
01	2+	F	Dec. 6	6:00-7:30p	\$8/\$10

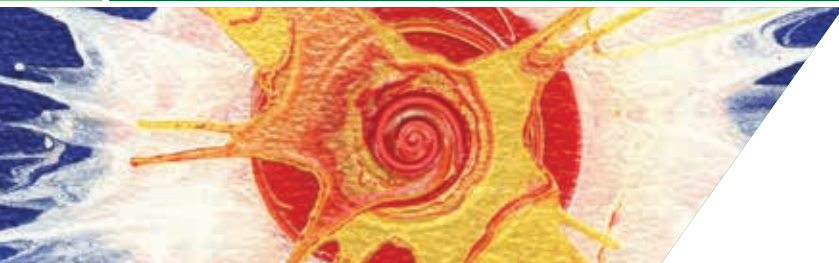
Teen Dance

REC Center, Theater - Activity #3700090

Dance the night away with a Teen Dance! PREREGISTRATION IS RECOMMENDED, REGISTRATION IS REQUIRED. Preregistration is open until two days prior to the dance, after which registration fees increase to \$10. Teen Dances include a live DJ, giveaways, and concessions and provide the ultimate opportunity for a fun night for teens. (SP)

SECTION	GRADE	DAY	DATE(S)	TIME	FEE R/NR
01	6	F	Sept. 13	7:00-9:00p	\$6
02	5	F	Oct. 4	7:00-9:00p	\$6
03	6-8	F	Dec. 13	7:00-9:00p	\$6





COMPUTER EXPLORERS

Intro to Programming

REC Center, Magnolia Room - Activity #3252020

This course will introduce non-readers or early readers to the concepts of programming with Logo. Using iconic point and click commands to develop math, logic, and problem-solving skills as they explore and create a project they can imagine. Meets at REC Center. Contracted by Computer Explorer. (CL)

No Class Date(s): 11/26

SECTION	AGE	DAY	DATE(S)	TIME	FEE R/NR
01	5-7	Tu	Nov. 12 - Dec. 10	6:00-7:00p	\$75/\$94

"R" is for Robotics

REC Center, Magnolia Room - Activity #3252021

Meet a different member of the robot team each week - C.A.P., Roamer, Colby, Bee-Bot and Speedy as we work in teams to plan a trip through a maze, make music, draw shapes and more. We'll learn about coding and programming. If at first we don't succeed, try, try again! Meets at REC Center. Contracted by Computer Explorer. (CL)

SECTION	AGE	DAY	DATE(S)	TIME	FEE R/NR
01	4-7	Tu	Sept. 17 - Oct. 8	6:00-7:00p	\$75/\$94

Robot Engineers

Algonquin Historic Village Hall, - Activity #3252022

This course builds knowledge of simple machines, engineering, programming, and teamwork using the LEGO WeDo Robotics System, as students use an intuitive, icon-based programming environment, helping bring their model to life. Meets at Algonquin Village Hall. Contracted by Computer Explorer. (CL)

SECTION	AGE	DAY	DATE(S)	TIME	FEE R/NR
01	7-12	Tu	Oct. 15 - Nov. 5	6:00-7:15p	\$93/\$117



GENERAL YOUTH PROGRAMS



Nerf Elite Battle

REC Center, Cafeteria - Activity #3404040

Come experience this Classic basement game in an arena style team game. Each week we will play many different Nerf Elite battle games, including an all-out battle. All guns, ammo and eye protection will be provided. Contractual activity provided by Hot Shot Sports. (MJ)

No Class Date(s): 11/26

SECTION	AGE	DAY	DATE(S)	TIME	FEE R/NR
01	5-8	Tu	Sept. 17 - Oct. 15	5:00-6:00p	\$55/\$69
02	9-12	Tu	Nov. 5 - Dec. 10	6:00-7:00p	\$55/\$69

Mini Ninja Warriors

REC Center, Cafeteria - Activity #3404050

Leap, hop, skip, run your way through obstacles and put your Ninja skills to the test. This fun movement-based class will challenge your Ninja to maneuver over and under objects. We will also play many large group games to further challenge their Ninja skills. Contractual activity provided by Hot Shot Sports. (MJ)

No Class Date(s): 11/28

SECTION	AGE	DAY	DATE(S)	TIME	FEE R/NR
01	4-6	Th	Sept. 19 - Oct. 17	6:00-6:45p	\$55/\$69
02	4-6	Th	Nov. 7 - Dec. 12	6:45-7:45p	\$55/\$69



ART

Youth Art

Deicke Park, Community Room - Activity #3402010

Experiment and practice with various mediums to create a new work of art each week. Artwork will be collected by the instructor and displayed on the last day before being handed back. (HM) **No class Date: 11/29**

SECTION	GRA	DAY	DATE(S)	TIME	FEE R/NR
01	K-2	F	Sept. 21 - Oct. 25	5:00-6:30p	\$50/\$60
02	3-5	F	Nov. 1 - Dec. 13	5:00-6:30p	\$50/\$60

HORSE RIDING

Horsemanship

Marengo, Platinum Farm - Activity #3405010

Participants will learn how to safely interact with horses, properly groom and tack a horse as well as the basics of horseback riding in a family friendly arena. All skill levels are welcome. Please come dressed in long pants and hard soled boots. Helmets are required and provided if needed. (MJ)

SECTION	AGE	DAY	DATE(S)	TIME	FEE R/NR
01	5-17	Sa	Sept. 21 - Oct. 26	11:00a-12:00p	\$125/\$135
02	5-17	F	Sept. 20 - Oct. 25	6:00-7:00p	\$125/\$135



CHEER AND POM

Basketball Cheerleading

REC Center, Oak Room - Activity #3150120

Have fun learning cheers, jumps, and tumblers in our in-house cheerleading program! Cheerleaders practice on Tuesday nights at the REC Center and perform on Saturdays at the REC Center during Huntley Park District's basketball games. Each cheerleader will receive a team bow! An informational parent meeting and uniform fitting will be hosted two weeks prior to the first practice.

No Class date(s): Dec 24, 31

SECTION	GRADE	DAY	DATE(S)	TIME	FEE R/NR
01	K-1	Tu	Nov. 19 - Feb. 18	4:30-5:30p	\$169/\$212
02	2-3	Tu	Nov. 19 - Feb. 18	5:30-6:30p	\$169/\$212
03	4-5	Tu	Nov. 19 - Feb. 18	6:30-7:30p	\$169/\$212

Basketball Poms

REC Center, Elm Room - Activity #3150220

Enhance your dance skills and learn routines in our in-house Poms program! Pommers practice on Tuesday nights, and perform on Saturdays at REC Center during half-time of Huntley Park District's Basketball games. Each Pommer will receive a pair of pom-poms! An informational parent meeting and uniform fitting will be hosted two weeks prior to the first practice.

No Class date(s): Dec 24, 31

SECTION	GRADE	DAY	DATE(S)	TIME	FEE R/NR
01	K-1	Tu	Nov. 19 - Feb. 18	4:30-5:30p	\$169/\$212
02	2-3	Tu	Nov. 19 - Feb. 18	5:30-6:30p	\$169/\$212
03	4-5	Tu	Nov. 19 - Feb. 18	6:30-7:30p	\$169/\$212



Youth Sports League Requests

There are two types of requests that will be accepted during registration for a Huntley Park District recreational youth sports leagues.

Friendship requests can be completed at the time you register your child, provided it is before the published registration deadline for the league. When registering your child for a league that allows this type of request, you will be prompted for "Roster Notes." Here you may provide the name of only one friend that you would like to have your child placed on the same team with. Both parties must request the same friend request. Head and assistant coaches that would like to coach together must use the one allowed friendship request to guarantee that coaching pairing. Coaches will not be allowed to have separate coaching pair and a friend request.

We will also honor any request completed at the time of registration to NOT have a specific coach.

Any other requests such as to have a specific coach or regarding specific practice nights cannot be guaranteed due to the large size of the leagues and the number of variables in scheduling that are not known until registration has been completed.

Youth Sports League Volunteers

Volunteers are needed for each team. If you are interested in coaching, please visit our volunteer coaching page at www.huntleyparks.org or send an e-mail to rcoffland@huntleyparks.org. You will also be asked for your interest in coaching during registration and you can indicate your interest there.

Days Off Open Gym for 1st-8th Graders

The gym at the REC Center will be open on selected non-school days for students from 11:00am-1:00pm. The gym will be monitored by a Huntley Park District staff member; however, children under 12 must have parent or responsible adult onsite in the building. Pick-up games may be limited to 1/2 court based on turnout. \$5 fee and the parent/guardian must sign the program waiver on site. Dates of availability include: 9/27, 10/14, 11/25, 11/26, 11/27, and 11/29

Youth Sports Seasonal Registration Information

Here is a brief summary of when to expect to see information and when to register for youth recreational sports leagues offered by the Huntley Park District:

PROGRAM GUIDE	SPORT	AGES	REGISTRATION PERIOD	SEASON DATES
Winter/Spring	Spring Soccer	4-14	December-February	March-June
Winter/Spring	T-Ball/Coach Pitch*	3-6	December-May	June-July
Summer	Fall Soccer	4-14	April-July	August-October
Summer	Flag Football	6-12	April-July	August-October

*Youth baseball and softball for ages 7-16 is offered through the Huntley Little League. Registration is typically conducted in December and January and season runs April-June. More information on this program can be found at huntleyparkdistrict.org

See pg. 28 for information on Adult Sports Programs

YOUTH SPORTS CLASSES

Floor Hockey

REC Center, Cafeteria - Activity #3755010

This clinic provides participants the opportunity to learn and play floor hockey in a safe and fun environment. Players learn positions, stick handling and ball control in this fun, fast-paced class. In addition, players develop teamwork and sportsmanship while having fun competitive game play each week. Safety and having fun is a MUST when you step on the floor. Come ready to play! Contractual activity provided by Hot Shot Sports. (MJ)

No Class Date(s): 11/27

SECTION	AGE	DAY	DATE(S)	TIME	FEE R/NR
01	7-10	W	Nov. 6 - Dec. 11	6:45-7:45p	\$55/\$69

Pee Wee Hockey

REC Center, Cafeteria - Activity #3755009

Have your child's first hockey experience be a blast! To ensure a safe environment, Pee Wee Floor Hockey players play with pillow polo sticks, which have a soft-cushion end. Participants learn the basics of the game and experience the thrills of being a hockey player! Contractual activity provided by Hot Shot Sports. (MJ)

SECTION	AGE	DAY	DATE(S)	TIME	FEE R/NR
01	4-6	W	Sept. 18 - Oct. 16	6:00-6:45p	\$55/\$69

VOLLEYBALL

Girls Volleyball League

REC Center, Gym Full - Activity #3757000

Bump, set, and Spike! This league for 5th and 6th grade players and typically includes either two practices or one practice and one game each week. Prior to the first game, practices will be held on Tuesdays and Thursday. Once games begin, practices will be held on Tuesdays with games on Thursdays, Saturdays and potentially Mondays. The league will also include teams from Hampshire and Genoa, so travel to other communities for games will be necessary. The program fee includes a team t-shirt. Registration deadline is August 20 or when the maximum enrollment is reached. A \$15 late registration fee will be added to any enrollments that are approved after the deadline. Additional games may be held on Mondays & Saturdays. (RC)

SECTION	AGE	DAY	DATE(S)	TIME	FEE R/NR
01	10-12	Tu&Th	Aug. 27 - Oct. 19	6:30-8:30p	\$113/\$170

Instructional Volleyball Clinic

REC Center, Gym South - Activity #3755055

This program is a great introduction to the game of volleyball and will prepare players for future enjoyment of this great sport. Players will be introduced to the basic techniques of volleyball including the bump, set and dig. Each participant will receive a t-shirt and have the opportunity to attend a Huntley High School varsity volleyball match as part of their fee. (RC)

SECTION	AGE	DAY	DATE(S)	TIME	FEE R/NR
01	9-10	Tu	Aug. 27 - Oct. 15	5:00-6:15p	\$98/\$147



ICE SKATING

Parent Tot Ice Skating

Canlan Ice Sports - West Dundee - Activity #3753010

Our Parent/Tot class introduces basic skating skills to you and your little one. (MJ)

No Class Date(s): 11/2, 11/30

SECTION	AGE	DAY	DATE(S)	TIME	FEE R/NR
01	3-5	Sa	Aug. 31 - Oct. 19	9:50-10:20a	\$133/\$143
02	3-5	Sa	Oct. 26 - Dec. 21	9:50-10:20a	\$116/\$126

Snowplow Sam Ice Skating 1

Canlan Ice Sports - West Dundee - Activity #3753020

An introductory class for skaters with no prior skating experience. Skaters will build confidence while learning the basic skills of skating in an atmosphere of fun, using games, and ice safe toys. (MJ)

No Class Date(s): 10/30, 11/27, 11/1, 11/29, 11/30

SECTION	AGE	DAY	DATE(S)	TIME	FEE R/NR
01	3-5	W	Aug. 28 - Oct. 16	11:10-11:40a	\$133/\$143
02	3-5	W	Aug. 28 - Oct. 16	5:20-5:50p	\$133/\$143
03	3-5	F	Aug. 30 - Oct. 18	11:10-11:40a	\$133/\$143
04	3-5	F	Aug. 30 - Oct. 18	5:10-5:40p	\$133/\$143
05	3-5	Sa	Aug. 31 - Oct. 19	9:50-10:20a	\$133/\$143
06	3-5	W	Oct. 23 - Dec. 18	11:10-11:40a	\$116/\$126
07	3-5	W	Oct. 23 - Dec. 18	5:20-5:50p	\$116/\$126
08	3-5	F	Oct. 25 - Dec. 20	11:10-11:40a	\$116/\$126
09	3-5	F	Oct. 25 - Dec. 20	5:20-5:40p	\$116/\$126
10	3-5	Sa	Oct. 26 - Dec. 21	5:20-5:40p	\$116/\$126

Basic Ice Skating 1

Canlan Ice Sports - West Dundee - Activity #3753030

For those who have never skated or have never had formal lessons. Skaters ages 6 and up will learn the basics of Figure Skating including how to balance, skating forwards, and skating backwards. (MJ)

No Class Date(s): 10/30, 11/27, 11/1, 11/29, 11/30

SECTION	AGE	DAY	DATE(S)	TIME	FEE R/NR
01	6-12	W	Aug. 28 - Oct. 16	5:20-5:50p	\$133/\$143
02	6-12	F	Aug. 30 - Oct. 18	5:20-5:50p	\$133/\$143
03	6-12	Sa	Aug. 31 - Oct. 19	9:50-10:20a	\$133/\$143
04	6-12	W	Oct. 23 - Dec. 18	5:20-5:50p	\$116/\$126
05	6-12	F	Oct. 25 - Dec. 20	5:10-5:40p	\$116/\$126
06	6-12	Sa	Oct. 26 - Dec. 21	9:50-10:20a	\$116/\$126

Adult and Teen Ice Skating 1

Canlan Ice Sports - West Dundee - Activity #3753040

The Adult and Teen class is designed for both beginning and experienced skaters who wish to learn a new talent or improve their current skating skills. (MJ)

No Class Date(s): 10/30, 11/27, 11/30

SECTION	AGE	DAY	DATE(S)	TIME	FEE R/NR
01	13-99	W	Aug. 28 - Oct. 16	6:00-6:30p	\$133/\$143
02	13-99	Sa	Aug. 31 - Oct. 19	10:30-11:00a	\$133/\$143
03	13-99	W	Oct. 23 - Dec. 18	6:00-6:30p	\$116/\$126
04	13-99	Sa	Oct. 26 - Dec. 21	10:30-11:00a	\$116/\$126

Hockey Learn to Skate 1

Canlan Ice Sports - West Dundee - Activity #3753049

This class is for young skaters with hockey aspirations who have never had formal lessons before. Skaters will learn the very basics of balance, marching, and gliding. Helmets are required and are available for rent free of charge. (MJ)

No Class Date(s): 11/1

SECTION	AGE	DAY	DATE(S)	TIME	FEE R/NR
01	3-5	W	Aug. 28 - Oct. 16	11:10-11:40a	\$133/\$143
02	3-5	F	Aug. 30 - Oct. 18	11:10-11:40a	\$133/\$143
03	3-5	W	Oct. 23 - Dec. 18	11:10-11:40a	\$133/\$143
04	3-5	F	Oct. 25 - Dec. 20	5:10-5:55p	\$133/\$143

Hockey Learn to Skate 1

Canlan Ice Sports - West Dundee - Activity #3753050

This class is for young skaters with hockey aspirations who have never had formal lessons before. Skaters will learn the very basics of balance, marching, and gliding. Helmets are required and are available for rent free of charge. (MJ)

SECTION	AGE	DAY	DATE(S)	TIME	FEE R/NR
01	6-12	W	Aug. 28 - Oct. 16	5:10-5:55p	\$157/\$167
02	6-12	Sa	Aug. 31 - Oct. 19	8:00-8:45a	\$157/\$167
03	6-12	W	Oct. 23 - Dec. 18	5:10-5:55p	\$138/\$148
04	6-12	Sa	Oct. 26 - Dec. 21	8:00-8:45a	\$138/\$148

START SMART

Start Smart Basketball

REC Center, Elm Room - Activity #3755040

Start Smart Basketball teaches children the basic motor skills necessary to play organized basketball while they work one-on-one and spend quality time with their parents. The program is led by a staff coordinator and focuses on teaching children working directly with one or both of their parents skills in dribbling/ball handling, passing, catching, and shooting without the threat of competition or the fear of getting hurt. Each week the exercises become increasingly more difficult as the class progresses and the children show improvement. The first class is attended by the parent only for an orientation to the program. (RC)

SECTION	AGE	DAY	DATE(S)	TIME	FEE R/NR
01	3-5	M	10/21-12/2	5:00-6:00p	\$47/\$71

Start Smart Football

REC Center, Stingray Bay Multi-Purpose Field - Activity #3755040

Start Smart Football teaches children the basic motor skills necessary to play organized flag football while they work one-on-one and spend quality time with their parents. The program is led by a staff coordinator and focuses on teaching children working directly with one or both of their parents skills in throwing, catching, kicking/punting, and running/agility without the threat of competition or the fear of getting hurt. Each week the exercises become increasingly more difficult as the class progresses and the children show improvement. The first class is attended by the parent only for an orientation to the program. (RC)

SECTION	AGE	DAY	DATE(S)	TIME	FEE R/NR
01	3-5	Th	8/22-10/3	5:00-6:00p	\$47/\$71

BASKETBALL

Recreational Basketball League Information 1st-6th Grade

Recreational basketball leagues are designed for players to have fun, improve their skills and develop an enjoyment for the game. Each player will receive a team jersey. **Please make sure to indicate your child's correct shirt size when you register.**

Volunteers are needed for each team. Please see page 14 for more information about coaching.

Practices for all 1st-6th grade teams are scheduled to begin the week of November 11, with each team practicing once each week for one hour. Days and times for practices are not available until after coaches have been selected and teams have been assigned.

Each team will play 10 total games. We make every attempt to have all games on Saturdays but from time to time we may need to move some games to other days due to scheduling conflicts with the gyms or weather-related cancellations.

A single friendship request is available for this league. Please see the friendship request on page 14 for more details on friendship requests.

Parent orientation day will be held on Saturday, November 16 in the REC Center Gym. Times per age group will be announced after registration is complete.

Please check out our website at www.huntleyparks.org/athletics for more information. **Registration deadline is Monday, October 14.** After that date registration will only be taken if space is still available and a \$15 late fee will apply. Players registering late may be placed on a waiting list.

1st & 2nd Grade Instructional Basketball League Activity #3751020

This is a co-ed league that plays on 8ft. rims and uses a 27.5" junior size basketball.

SECTION	DATE(S)	FEE R/NR
01	Nov. 11 - Feb. 22	\$105/\$157



3rd & 4th Grade Basketball

Boys and girls will be separated into their own leagues starting at this age. Games for both boys and girls will be played at a 9 high rim. The 28.5 (Women's) basketball will be used for both leagues as well. (RC)

Boys Basketball League - Activity #3751030

Boys Evaluations - REC Center Gym

Sun 10/20	A-F 2:00-2:30pm M-R 3:00-3:30pm	G-L 2:30-3:00pm S-Z 3:30-4:00pm
Tu 10/22	A-F 6:00-6:30pm M-R 7:00-7:30pm	G-L 6:30-7:00pm S-Z 7:30-8:00pm

SECTION	DATE(S)	FEE R/NR
01	Nov. 11 - Feb. 22	\$121/\$182

Girls Basketball League - Activity #3751035

Girls Evaluations - REC Center Gym

Sun 10/20	A-M 4:00-4:30pm	N-Z 4:30-5:00pm
Wed 10/23	A-M 6:00-6:30pm	N-Z 6:30-7:00pm

SECTION	DATE(S)	FEE R/NR
01	Nov. 11 - Feb. 22	\$121/\$182

5th & 6th Grade Basketball League

Separate leagues will be offered for boys and girls. This league will use the standard 10' rim height. Both leagues will use a 28.5" (Women's) basketball. (RC)

Boys Basketball League - Activity #3751040

Boys Evaluations - REC Center Gym

Sun 10/20	A-F 5:00pm-5:30pm M-R 6:00pm-6:30pm	G-L 5:30pm-6:00pm S-Z 6:30pm-7:00pm
Thurs 10/24	A-F 2:00pm-2:30pm M-R 3:00pm-3:30pm	G-L 2:30pm-3:00pm S-Z 3:30pm-4:00pm

SECTION	DATE(S)	FEE R/NR
01	Nov. 11 - Feb. 22	\$127/\$190

Girls Basketball League - Activity #3751045

Girls Evaluations - REC Center Gym

Sun 10/20	A-M 7:00-7:30pm	N-Z 7:30-8:00pm
Wed 10/23	A-M 6:00-6:30pm	N-Z 6:30-7:00pm

SECTION	DATE(S)	FEE R/NR
01	Nov. 11 - Feb. 22	\$127/\$190

Pre-Season Basketball Clinic

This camp is designed to equip players, of all levels, with the Basketball skills and knowledge needed to train on their own. The camp will force players to make mistakes and understand their weaknesses. This on court skills training will help players learn how to self-access and be able to train on their own. Players should come to enjoy the process of learning new and exciting material and to challenge themselves. Please plan to bring a lunch and drink each day. Contracted by Skills Given. (RC)

REC Center Gym - Activity #3751060

SECTION	GRADE	DAY	DATE(S)	TIME	FEE R/NR
01	4-8	Sa	Sept. 7	9:00a-3:00p	\$75/\$94
02	9-12	Su	Sept. 8	9:00a-3:00p	\$75/\$94



7th and 8th Grade Boys Basketball League

This league will begin following the completion of the middle school season. Each team will play 10 total games and teams will consist of not more than 10 players. Teams will practice once a week beginning over the holiday break, with games beginning in January and continuing through early March. Volunteers are needed to coach each team that is formed in these leagues. If you are interested in coaching, please visit our volunteer coaching page at www.huntleyparks.org or send an e-mail to rcoffland@huntleyparks.org. Friendship requests are accepted; please see additional information on page 14. All players must attend a player evaluation event to help the coaches attempt to draft the fairest teams possible for the league. All players must attend one of the following evaluation sessions held in the REC Center Gym according to the first letter of their last name. Players should arrive at least 15 minutes prior to the start of their evaluation session to check in. Players who do not attend an evaluation session, or do not register until after the evaluations have been conducted will not be eligible to be drafted by coaches and will be randomly assigned to a team after the draft process is completed. **Registration deadline is Monday, November 25th. This league is expected to fill up completely, possibly before the registration deadline, so early registration is strongly encouraged.** In the event a league does not fill by the registration deadline, limited enrollment may still be available past that date, and will be subject to an additional \$15 late registration fee. (RC)

Boys Basketball League - Activity #3751050

Boys Evaluations, Location TBA

Sun 12/8 A-F 1:00pm-1:30pm G-L 1:30pm-2:00pm
M-R 2:00pm-2:30pm S-Z 2:30pm-3:00pm

SECTION	DATE(S)	FEE R/NR
01	Dec. 9 - Mar. 14	\$132/\$198

Girls Basketball League - Activity #3751055

Girls Evaluations, Location TBA

Sun 12/8 A-M 3:00-3:30pm N-Z 3:30-4:00pm

SECTION	DATE(S)	FEE R/NR
01	Dec. 9 - Mar. 14	\$132/\$198

High School Basketball League

REC Center, Gym - Activity #3751070

In this intramural-style basketball league, each team will play 10 regular season games, starting in December, followed by a post-season tournament. Each team determines their own roster and no player playing for their high school team at any level will be eligible to play at any point during the season. Team captains should register their team by Monday, November 11. A \$100 non-refundable deposit is required to hold your team's spot. Teams are responsible for providing their own numbered shirts/jerseys. Practice times are not provided. Most games during the regular season will be played on Sunday afternoons or evenings, however Friday or Saturday evening games may be played if. The post-season tournament may also have games on Fridays and Saturdays in order to complete the tournament before Spring Break. All participants must sign a waiver and if under 18 also must have parent sign waiver. Full payment for the team is due one week prior to games starting. A Division is for HS Sophomores through Seniors and B Division is for HS Freshmen through Juniors. (RC)

No Class Date(s): 12/22, 12/29

SECTION	DIVISION	DAY	DATE(S)	TIME	FEE
01	A	Su	Dec. 1 - Mar. 15	1:00-9:00p	\$600
02	B	Su	Dec. 1 - Mar. 15	1:00-9:00p	\$600

Junior Red Raiders Travel Basketball

REC Center, Gym North - Activity #3756055

This program is open only to District 158 students who are in 5th through 8th grade. Tryouts will be held to determine who will make the A and B teams for each grade/gender. Players must be able to attend at least one of the tryout dates to be considered for selection, with attendance at both tryout dates strongly encouraged. The season will consist of approximately 15 games against other area teams and 4 tournaments. Additional tournaments may be scheduled for an additional cost at the discretion of each individual team. There is no cost to tryout, but pre-registration before participating in a tryout is required.

When tryouts are completed, qualifying players will be notified of their status, given registration instructions, and will have one week to complete registration. Cost is \$400 per player, plus a uniform fee of approximately \$150 for the uniform kit. All new players are required to purchase the full uniform kit and that fee will be included with your registration fee. Replacement or additional uniform pieces such as a practice jersey, warm up, and other items will be available to be ordered at the start of the season. (RC)

SECTION	AGE	DAY	DATE(S)	TIME
11	Boys 5th Grade	Su	Sept. 29 & Oct. 6	5:00-6:30p
12	Girls 5th Grade	W&Su	Sept. 15 & Sept. 18	6:00-7:30p
13	Boys 6th Grade	Su	Sept. 29 & Oct. 6	6:30-8:00p
14	Girls 6th Grade	W&Su	Sept. 15 & Sept. 18	6:00-7:30p
15	Boys 7th Grade	Su	Nov. 3 & Nov. 10	5:00-6:30p
16	Girls 7th Grade	W&Su	Sept. 15 & Sept. 18	7:30-9:00p
17	Boys 8th Grade	Su	Nov. 3 & Nov. 10	6:30-8:00p
18	Girls 8th Grade	W&Su	Sept. 15 & Sept. 18	7:30-9:00p

Adult Basketball League

REC Center, Gym - Activity #3052050

Teams will play 10 regular season games followed by a post-season tournament. Team captains should register their team by Monday, November 11. A \$100 non-refundable deposit is required to hold your teams spot in the league, with will be due the balance due one week before the first game. Teams are responsible for providing their own numbered shirts/jerseys. Most games during the regular season will be played on Sunday afternoons or evenings; however, Friday or Saturday evening games may be played if necessary based on the number of teams entered and may be used for the post season tournament in order to complete the tournament before spring break.

No Class Date(s): 12/22, 12/29

SECTION	AGE	DAY	DATE(S)	TIME	FEE
01	18+	Su	Dec. 1 - Mar. 15	4:00-9:00p	\$600
02	35+	Su	Dec. 1 - Mar. 15	4:00-9:00p	\$600

2019 Fall Fest Basket Raffle Fundraiser

We will be holding our 10th Annual Fall Fest Basket Fundraiser with our fall sports teams. Team will be asked to put together a gift basket package to be raffled off during the Huntley Fall Fest.

Over the past 9 years over \$35,000 has been raised for improvements to our youth sports facilities and equipment such as storage boxes and shed at park locations and the establishment of a financial assistance fund for our youth sports programs through the Huntley Park Foundation.

Team party prize packages will be awarded for the top 5 earning team baskets. Winning teams will be calculated by the number of tickets entered to each team's basket drawing.

Coaches and teams will be given details on this year's event at the Fall Sports Parent Orientation Day on Saturday, August 17. Baskets will be due on Saturday, September 17 and be available for viewing and the start of ticket sales at the REC Center beginning on Tuesday, September 14. Ticket sales and baskets will move to the Fall Fest event area on Friday evening and tickets will be sold up until 3:00p on Sunday. Winning tickets will be drawn immediately after the sale of tickets ends. Baskets will be available for immediate pick up to winning ticket holders. Tickets will be sold at a cost of one ticket for \$1, six for \$5, fifteen for \$10 and forty for \$20. Winners need not be present at the drawing to win. Winning ticket numbers will be posted on location at Fall Fest and also on the Huntley Park District Facebook Site.

2019 Coach of the Year

Each year the Huntley Park District selects four finalists, including one winner, for our Volunteer Coach of the Year Award. Finalists are selected based on their dedication to the three key principles of the Positive Coaching Alliance; the ELM tree (effort, learning, and mistakes are OK), filling kids' emotional tanks, and honoring the game. Feedback from both participating families and our staff is taken into consideration when selecting these honorees.



2019 Coach of the Year
Jeff Barbera

Thank You Volunteer Coaches!

The Huntley Park District would like to thank the following volunteer head coaches for their time, patience, and dedication during the Spring and Summer 2019 seasons.

Kiddie Soccer

Jared Ison
Marcus Boyton
Jeff Barbera
David Koester
Michael Leavitt
Marc Klemencic
Ryan Maroney
Mark Czernek
Melissa Gutierrez
Ryan Cottrell
Shawn Watcher
Josh Rowoldt
Joe Hartl

Junior Soccer

Josh Homuth
Michelle Farquhar
Val Petkov
David Koester
Courtney Gotsch
Dan Edminster
Jim Thompson
Paulo Parra
Aldo Schumann
Jeff Barbera

U8 Soccer

Tim Pletz
Justin Cichowksi
Marc Klemencic
Michael Bondi
Thomas Boniak
Harold Buchholz
Scott Naydenoff
Erik Christensen
Ly Nguyen
Michael Wood
Aaron Holbrook
Steve Klein

U10 Boys

Kyle Stewart
Paulo Parra
Marc Klemencic
Abraham Rico
Mike Fisher
Jason Baedke
Dustin Hill
Todd Egan

U10 Girls

Anna Ellman
Nick Kohn
Brian Hayes
Richard Pristera

U12 Boys

Glenn Barg
John Reisenbuchler
Charles Passarelli
Dave Rensberger

U12 Girls

Jason Decraene
Chris Scholer
Alex Karaviotis

U14 Boys

Martin Alvarado

U14 Girls

Patrick Ullrich

Minor League T-Ball

Dan Starck
Steven Gagliano
Kiel Ochalek
Alex Stezkal
Ryan Mastandrea
Brad Nereem
Joe Saftig
Brad Navarro

Major League T-Ball

Mike Deangeles
Eugene Knaus
Carl Gustafson
Nick Mcleod
Connor Kretz
John Gallagher
Michael Zimmerman
Brian Flannigan
Nick Jackson
Mike Fisher

Lil Minors Baseball

John Gallagher
Brad Nereem
Luiz Zaragoza
Brandon Protano
Andy Gibbs
Joe Saftig
Brandon Hodolitz
Brian Slowinski
Michael Grebenick
Michael Drwal
Steven Gagliano
Jeff Barbera

Lil Minors Softball

Jason Kunash
Chad Steele
Steve Dhalen
Adam Piper

Red Raiders Travel Softball

Softball Coordinator- Dave Rysavy

9U- Chris Watson
10U- Tracy Kilvinger
11U- Shaun Rainey
11U/12U- Chris Romano
12U- Becky Shaw
14U- Mike Taylor
16u- Dave Rysavy

	FITNESS CENTER	GROUP FITNESS	ULTIMATE FITNESS
ANNUAL MEMBERSHIP (SINGLE PAYMENT)			
INDIVIDUAL	\$299	\$330	\$540
DUAL	\$510	\$570	\$990
SENIOR	\$165	\$210	\$375
STUDENT	\$195	\$240	\$420
YOUTH	\$195	N/A	N/A
6 MONTH MEMBERSHIP (SINGLE PAYMENT)			
INDIVIDUAL	\$165	\$180	\$285
DUAL	\$285	\$315	\$525
SENIOR	\$100	\$120	\$203
STUDENT	\$112	\$135	\$225
MONTHLY MEMBERSHIP			
YOUTH	\$20	N/A	N/A
ONE MONTH	\$40	\$45	\$50
THREE MONTH	\$95	\$105	\$130
AUTOMATED MONTHLY PAYMENT			
INDIVIDUAL	\$30	\$33	\$50
DUAL	\$52	\$57	\$93
SENIOR	\$15	\$18	\$33
STUDENT	\$21	\$25	\$40
FITNESS CENTER DROP-IN \$5.00			
FITNESS CLASS DROP-IN FEE \$10.00			

Fitness Membership Types

Fitness Center Membership: Access to Fitness Center.

Group Fitness Membership: Access to all Group Fitness Membership Classes (not pre-registration classes).

Ultimate Fitness Membership: Access to Fitness Center & all Group Fitness Membership Classes (not pre-registration classes).

Individual	Any individual between the ages of 13 and 54
Dual	Any two individuals residing in the same household
Senior	Any individual 55 years of age or older
Student	Any individual between the ages of 13 and 24 with a valid school ID
Youth	Any individual ages 10-12 that has completed the Youth Fitness course (Must be accompanied by an individual age 18 or older when using the fitness center)

Fitness Membership Payment Options

Initiation Fee: Regular Initiation Fee is \$49 for first person and \$29 for second. Specials may be offered from time to time on this rate.

Single Payment Memberships

(1-year, 6-month, 3-month, and 1-month):

- Full Payment due up front via cash, check or credit card.

Automated Monthly Memberships

- Monthly payment will be automatically withdrawn on the first day of each month from the designated account or credit card.
- Automated Monthly Payments will continue until cancelled.
- 1st and 12th month payments are due upon registration to activate an auto monthly membership, for the initial 12 month period.
- Membership cancellations must be submitted in writing with a 30 day notice.

Refunds

- No refunds on memberships with the exception of a written medical excuse from a doctor.
- Refund will be prorated from the date of the request.

***The Huntley Park District retains the right to reject the requested refunds.**

Fitness Center Hours

Monday-Thursday 5:30am-9:00pm

Friday 5:30am-7:30pm

Saturday 7:00am-1:00pm

Sunday 7:00am-1:00pm

FITNESS CENTER CLOSED

September 2, November 28, December 24-25 & 31
January 1

Fitness Flex Pass

10 visits: \$30

Want to try out the Fitness Center a few times before committing to a membership? Purchase a 10-visit fitness FLEX pass and workout in the Fitness Center when you want without paying a drop-in each time!

Punch card expires three months from the date of purchase.

Fitness FLEX pass does not apply to Group Fitness classes, Monday night adult drop in basketball, Wednesday night adult drop in volleyball, or any open gym.

Membership Complimentary Services

- **FREE** Towel Service
- **FREE** Locker Room Usage
- **FREE** Fitness Equipment Orientation
- **FREE** Fitness Assessment
- **FREE** Guest Passes (3) with new membership
- **FREE** Workout Tracker
- **FREE** Fitness on Demand Use
- Discounted rates on Fitness registration classes





To view the current Group Exercise Class schedule visit our website:
www.huntleyparks.org/group-exercise

Class Pass

10 Registration or Group Fitness Classes: \$75

Is your schedule too busy to commit to a full session of classes? Do you have interest in trying a few classes out that are offered, but do not want to commit to a single one? Purchase a Class Pass and enjoy any of our Registration or Group Fitness classes when it works best for YOU!

Please Note: *Punch pass expires three months from the date of purchase. No refunds or transfers. Class Passes can only be purchased at the Registration Desk of the REC Center.*

REGISTRATION CLASS

NEW! Circuit Training

REC Center, Multipurpose Room - Activity #3350002

Take part in this circuit-based training program that offers a challenge for those of various ages and fitness levels. Class structure will vary, but can include some high intensity intervals followed by a series of functional movements using your body weight and training equipment. (MS)

No Class Date(s): 11/28

SECTION	AGE	DAY	DATE(S)	TIME	FEE R/NR
01	18-99	Tu	Sept. 10 - Oct. 22	6:10-7:00p	\$45/\$57
02	18-99	Th	Sept. 12 - Oct. 24	6:10-7:00p	\$52/\$65
03	18-99	Tu	Oct. 29 - Dec. 17	6:10-7:00p	\$52/\$65
04	18-99	Th	Nov. 7 - Dec. 19	6:10-7:00p	\$39/\$49

Cardio, Tone, & Core

REC Center, Dance Studio - Activity #3350003

Each week you will feel the burn with this incredible fitness mashup as the routine will change each class and in just 50 minutes you will get the best full-body workout that you have ever had! (MS)

SECTION	AGE	DAY	DATE(S)	TIME	FEE R/NR
01	18-99	M	Sept. 9 - Oct. 21	6:00-6:50p	\$45/\$57
02	18-99	M	Oct. 28 - Dec. 16	6:00-6:50p	\$52/\$65

NEW! Body Blast

REC Center, Dance Studio - Activity #3350004

High Intensity Interval Training is the fastest way to burn fat and give you that lean and ripped look! You will give all-out effort through quick bursts of exercise, followed by short active recovery periods, all while using your own body weight. All fitness levels welcome. (MS)

SECTION	AGE	DAY	DATE(S)	TIME	FEE R/NR
01	18-99	Sa	Sept. 14 - Oct. 26	8:00-9:00a	\$45/\$57
02	18-99	Sa	Nov. 2 - Dec. 21	8:00-9:00a	\$52/\$65

Studio Cycle

REC Center, Dance Studio - Activity #3350040

Studio Cycle is an indoor cycling class that combines the basic cycling movements with motivational coaching, breathing awareness and heart rate training. This non-impact individually paced, cardio class will build your muscle strength, increase your endurance and help shed unwanted pounds! (MS)

SECTION	AGE	DAY	DATE(S)	TIME	FEE R/NR
01	18-99	Tu	Oct. 29 - Dec. 17	10:15-11:10a	\$60/\$75

S.W.A.T.

REC Center, Dance Studio - Activity #3350050

SWAT (Strength, Wellness & Agility Training) will incorporate high rep/light weight muscular endurance training that will help you burn fat and redefine your muscular structure utilizing your own body resistance, ladders, over-sized tires and more! Class will take place outdoors at the Outdoor Fitness Park when weather permits. (MS)

No Class Date(s): 11/28

SECTION	AGE	DAY	DATE(S)	TIME	FEE R/NR
01	18-99	Th	Sept. 12 - Oct. 24	10:15-11:10a	\$45/\$57
02	18-99	Th	Oct. 31 - Dec. 19	10:15-11:10a	\$45/\$57

Zumba

REC Center, Dance Studio - Activity #3350095

Zumba brings together interval training fitness and high-energy movements to create an entertaining fat-burning workout. Dance your way to a tone body and have a blast! (MS)

No Class Date(s): 11/28

SECTION	AGE	DAY	DATE(S)	TIME	FEE R/NR
01	18-99	Th	Sept. 12 - Oct. 24	7:00-7:50p	\$45/\$57
02	18-99	Th	Nov. 7 - Dec. 19	7:00-7:50p	\$39/\$49



Yoga Essentials

REC Center, Elm Room - Activity #3350070

Yoga for body, mind and spirit. This flow class combines breath and movement for a strong, flexible, graceful body. The practice also calms the mind by building awareness and focus. Please bring a mat and blanket to class. (MS)

SECTION	AGE	DAY	DATE(S)	TIME	FEE R/NR
01	18-99	M	Sept. 9 - Oct. 21	9:00-9:50a	\$45/\$57
02	18-99	M	Oct. 28 - Dec. 16	9:00-9:50a	\$52/\$65

NEW! Yin Yoga

REC Center, Elm Room - Activity #3350071

Yin Yoga is for both new and experienced students. This slow-paced practice focuses on the connective tissue of the body, primarily in the hips and spine. Poses are held seated or lying on the back in a relaxed state. Please bring a mat and your own pillow to class. (MS)

No Class Date(s): 11/27

SECTION	AGE	DAY	DATE(S)	TIME	FEE R/NR
01	18-99	W	Sept. 18 - Oct. 23	7:00-7:50p	\$39/\$49
02	18-99	W	Oct. 30 - Dec. 18	7:00-7:50p	\$45/\$57

Yoga Flow

REC Center, Dance Studio - Activity #3350080

Relax and recharge while sculpting the body. The Vinyasa, dynamic style of Yoga moves through poses with ease and grace while increasing the length and depth of each movement. All poses may be modified to accommodate participants of varying skill levels. Please bring a mat to class. (MS)

SECTION	AGE	DAY	DATE(S)	TIME	FEE R/NR
01	18-99	Tu	Sept. 10 - Oct. 22	7:00-7:50p	\$45/\$57
02	18-99	Tu	Oct. 29 - Dec. 17	7:00-7:50p	\$52/\$65

Piloga

REC Center, Dance Studio - Activity #3350090

We've combined Pilates and Vinyasa Yoga! Improve your flexibility, muscular strength and alignment through Yoga poses and develop your core strength and stabilization through Pilates movements. All fitness levels welcome. (MS)

SECTION	AGE	DAY	DATE(S)	TIME	FEE R/NR
01	18-99	M	Sept. 9 - Oct. 21	7:00-7:50p	\$45/\$57
02	18-99	M	Oct. 28 - Dec. 16	7:00-7:50p	\$52/\$65



FITNESS™
ON DEMAND


PICK.CLICK.PLAY.

**YOUR FAVORITE
CLASSES YOUR
FAVORITE INSTRUCTORS
YOUR SCHEDULE**

A HUNTLEY PARK DISTRICT YOGA EVENT

HP HUNTLEY

FAMILY YOGA



COSMAN THEATER

NOVEMBER 9


Children 5 & Up • No Experience Necessary • 10:00 - 11:00am

\$20 per Adult-Child Pair / \$5 per Each Additional Adult or Child
Strengthen family bonds and create togetherness while enjoying the benefits of yoga. Poses will be explained in a kid friendly way. Be ready to laugh and spend quality time with your loved one!

HUNTLEYPARKS.ORG

A HUNTLEY PARK DISTRICT YOGA EVENT

PURE BLISS



FRIDAY, SEPTEMBER 27 | 7:00PM - 8:30PM | \$15/\$25

INSTRUCTOR CHRISTINA STEWART

Join Christina for an evening of blissful yoga to help you find a deep state of relaxation. Melt into gentle yoga poses to soothing music surrounded by soothing aromatherapy.

Huntley Park District REC Center | Cosman Theater | HUNTLEYPARKS.ORG

HP HUNTLEY
PARKS • FITNESS

MEET OUR NEW CERTIFIED YOUTH & SENIOR FITNESS SPECIALIST



As an ex-Firefighter, Nick Konnen understands some of the most extreme demands the human body can work through, as well as how to recover from them. Nick's focus is on resistance training and helping clients of all ages learn how to safely and correctly attain their optimal level of fitness. Nick is a certified NASM Certified Personal Trainer, Exercise Specialist, and Senior Fitness Specialist.

If you are interested in hearing how Nick can help you, no matter what your age or personal health status is, call us today to schedule your introductory session.

PERSONAL TRAINING

Let our certified personal trainers inspire and help you achieve your personal fitness goals by working one on one with you. Lose weight, increase your strength or work at improving your general health!

1 Hour Individual Personal Training

Sessions	Member/Non-Member Fee
1	\$50/\$70
6	\$270/\$320

30 Minute Individual Personal Training

Sessions	Member/Non-Member Fee
1	\$25/\$30
6	\$135/\$170

1 Hour Partner Training

Rates are per person

Sessions	Members	Member & Non-Member	Non-Members
1	\$78	\$94	\$104
6	\$420	\$504	\$560

1 Hour Small Group Training (3+ people)

Rates are per person

Sessions	Members/Non-Members
1	\$28/\$38
6	\$150/\$204



SENIOR FITNESS

Lite & Lively

Rec Center, Dance Studio

Enjoy socializing with your peers while getting the kind of exercise that will help you maintain your reaching ability, strength and flexibility. Participants work at their own pace under the direction of knowledgeable instructors who provide a variety of exercises using chairs and light weight equipment. No floor work is involved. (MS)

Mondays, Wednesdays, & Fridays 10:30-11:30am

Age: 55+

Try us out for a day at no charge.

***Monthly Membership: \$19 Daily Drop-in: \$5**

*Auto monthly withdrawal or 3 month pre-pay

A Matter of Balance

REC Center, North Classroom - Activity #3350001

This program is proven and designed to help people manage concerns about falls and increase physical activity. Participants will identify ways to reduce falls and take part in exercises to help increase strength and balance. Participants are encouraged to attend entire 8-week program, as each week will provide new exercises and information. Pre-registration is required. (MS)

SECTION	AGE	DAY	DATE(S)	TIME	FEE R/NR
01	55-99	Tu	Sept. 17 - Nov. 5	10:30a-12:30p	Free

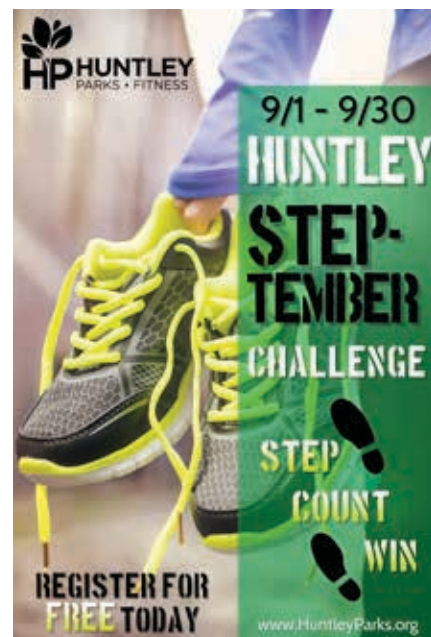
YOUTH FITNESS ORIENTATION

Does your child have an interest in fitness? Would you like to see them get involved in healthy and wellness? If so, we can both educate and demonstrate our Fitness Center guidelines, injury prevention, basic health concepts, and proper machine usage in our 1-hour Youth Fitness Orientation. Includes 1-Month Youth Fitness Membership*. No refunds given following completion of orientation. *Youth Fitness Members must be accompanied by an individual 18-years or older when working out.

Age: 10-12

Contact Matt Szytz 847-515-7465 or at matt@huntleyparks.org

Course (1-Month Fitness Center Membership Included): \$45





In collaboration with Northern Illinois Special Recreation Association and AllenForce, the Huntley Park District offers a FREE fitness program for qualified veterans called Healthy Minds Healthy Bodies.

Qualification Requirements:

Honorable Discharge & at least a 10% disability rating or post-service injury/illness equivalent.

Qualified Veterans Receive:

- 1-Year Huntley Park District fitness membership for veteran and a partner.
- 15 FREE Personal Training sessions with a qualified trainer.
- FREE monthly networking events.

For more information, contact NISRA's Kara DiTusa at (815)459-0737 or kditusa@nisra.org



Enjoy peace of mind knowing that your children are in a safe and fun environment while you exercise or enjoy programs offered by the Park District.

- Children must be between the ages of 3 months and 11 years.
- Reservations must be made 24 hours in advance for infants by calling 847-669-3180 ext. 391.
- A 2.5-hour limit is allowed in Kids Club Babysitting.
- Parent/guardian must remain on Huntley Park District premises.
- Prices and hours are subject to change.

1-Year Kids Club Membership

First Child	\$204.00
Additional Child	\$120.00

Automated Monthly Payments

First Child	\$20.00
Additional Child	\$13.00

Drop in Fee

First Child	\$5.00
Additional Child	\$4.00

Kids Club 15-Visit Punch Pass \$50.00

Open Monday through Friday 8:30am-11:30am*

***Will be open at 8:00am on days Group Exercise has a scheduled 8:00am class**

GROUP FITNESS MEMBERSHIP CLASSES

Cardio Kickboxing

Kick, punch and jump your way to fitness with this high energy, fat blasting workout! This class guarantees to get your heart rate pumping and muscles burning with challenging agility drills, kickboxing sequences and more!

Fitness Mashup

Workout your full body and leave no muscle untouched before the weekend! Fitness Mashup puts a focus on exercises that require you to use muscles throughout your entire body and aim to increase your endurance, strength, flexibility and balance.

Interval Training

Interval Training will accomplish two goals: it will help accelerate fat loss and it will help improve aerobic and anaerobic endurance. Performing low to moderate intensity exercises alternated with high intensity exercises has proven to show the results your looking for in a short period of time!

Morning Core

Start your day by with a light core-strengthening and body-toning workout. In these 45-minutes you'll enjoy an mild-paced routine that will result in a stronger and more defined body!

Power Pump

Get ready to sweat with this effective fat burning and body toning class! Utilizing equipment such as medicine balls, resistance bands, dumbbells and more, you will shed those unwanted calories in no time!

Spin

Get your sweat going and There is no better way to build your endurance, shed those unwanted pounds, and push yourself to new limits than taking Spin! Our instructor will motivate you through to the finish line without a doubt, so grab your towel, feel the rhythm and let's ride!

Strictly Strength

Experience this challenging and dynamic total body strength class that features the usage of fitness equipment such as dumbbells, resistance bands, exercise balls, BOSU balls and more!

Total Fit

Total Fit will get you fit from head to toe. Use bands, weights, mats, cardio movements, and your own body weight to work your entire body. The class caters to both beginners and advanced levels of fitness, using modifications and challenges so everyone can achieve their own individual goals.





STUDIO DANCE

Creative Dance 1

REC Center, Oak Room - Activity #3601010

These classes offer movement activities for beginner dancers and concentrate on pre-ballet. Contractual Program provided by Dixon Dance Academy. (MJ)

No Class Date(s): 11/25, 11/27, 11/29, 11/30

SECTION	AGE	DAY	DATE(S)	TIME	FEE R/NR
01	3-4	M	Sept. 9 - Dec. 2	11:15-11:45a	\$108/\$135
02	3-4	M	Sept. 9 - Dec. 2	4:15-4:45p	\$108/\$135
03	3-4	W	Sept. 11 - Dec. 4	5:30-6:00p	\$108/\$135
04	3-4	F	Sept. 13 - Dec. 6	4:00-4:30p	\$108/\$135
05	3-4	Sa	Sept. 14 - Dec. 7	10:00-10:30a	\$108/\$135

Creative Dance 2

REC Center, Oak Room - Activity #3601011

These classes offer movement activities for beginner dancers and concentrate on pre-ballet. Creative 2 & 3 add introduction to tap. Contractual Program provided by Dixon Dance Academy. (MJ)

No Class Date(s): 11/25, 11/26, 11/27, 11/29, 11/30

SECTION	AGE	DAY	DATE(S)	TIME	FEE R/NR
01	4-5	M	Sept. 9 - Dec. 2	11:45a-12:30p	\$120/\$150
02	4-5	Tu	Sept. 10 - Dec. 3	4:00-4:45p	\$120/\$150
03	4-5	W	Sept. 11 - Dec. 4	6:00-6:45p	\$120/\$150
04	4-5	F	Sept. 13 - Dec. 6	4:30-5:15p	\$120/\$150
05	4-5	Sa	Sept. 14 - Dec. 7	10:30-11:15a	\$120/\$150

Creative Dance 3

REC Center, Dance Studio - Activity #3601012

These classes offer movement activities for beginner dancers and concentrate on pre-ballet. Creative 2 & 3 add introduction to tap. Contractual Program provided by Dixon Dance Academy. (MJ)

No Class Date(s): 11/29

SECTION	AGE	DAY	DATE(S)	TIME	FEE R/NR
01	5-6	F	Sept. 13 - Dec. 6	5:15-6:15p	\$132/\$165

Registration deadline for dance classes is 7 days prior to classes starting. To avoid class cancellations please register as early as possible.

Kids Pop 1

REC Center, Dance Studio - Activity #3601020

This class is a precursor to jazz and hip-hop. Students will learn how to manage formations and beginner hip-hop and jazz steps. Contractual Program provided by Dixon Dance Academy. (MJ)

No Class Date(s): 11/25, 10/31, 11/28

SECTION	AGE	DAY	DATE(S)	TIME	FEE R/NR
01	5-8	M	Sept. 9 - Dec. 2	4:45-5:45p	\$132/\$165
02	5-8	Th	Sept. 12 - Dec. 5	5:30-6:30p	\$132/\$165

Jr. Hip Hop

REC Center, Oak Room - Activity #3601050

Students will learn how to manage formations and beginner hip-hop and jazz steps. Contractual Program provided by Dixon Dance Academy. (MJ)

No Class Date(s): 10/31, 11/28, 11/29

SECTION	AGE	DAY	DATE(S)	TIME	FEE R/NR
01	9-12	Th	Sept. 12 - Dec. 5	6:30-7:30p	\$132/\$165
02	9-12	F	Sept. 13 - Dec. 6	6:15-7:15p	\$132/\$165

Teen Hip Hop

REC Center, Oak Room - Activity #3601060

Students will learn how to manage formations and beginner hip-hop and jazz steps. Contractual Program provided by Dixon Dance Academy. (MJ)

No Class Date(s): 10/31, 11/28

SECTION	AGE	DAY	DATE(S)	TIME	FEE R/NR
01	13-18	Th	Sept. 12 - Dec. 5	7:30-8:30p	\$132/\$165



STUDIO DANCE

Teen Ballet

REC Center, Oak Room - Activity #3601061

Ballet classes teach the fundamentals of barre and center work using various styles and techniques. Ballet classes help students to acquire correct body placement and are a precursor for proper development in all other forms of dance. Contractual Program provided by Dixon Dance Academy. (MJ)

No Class Date(s): 11/25

SECTION	AGE	DAY	DATE(S)	TIME	FEE R/NR
01	13-18	M	Sept. 9 - Dec. 2	7:15-8:45p	\$144/\$180

Tiny Combo

REC Center, Dance Studio - Activity #3601070

Combination classes include an introduction to formal ballet instruction along with 30 minutes of tap. Contractual Program provided by Dixon Dance Academy. (MJ)

No Class Date(s): 11/26, 11/30

SECTION	AGE	DAY	DATE(S)	TIME	FEE R/NR
01	5-8	Tu	Sept. 10 - Dec. 3	4:45-5:45p	\$132/\$165
02	5-8	Sa	Sept. 14 - Dec. 7	11:15a-12:15p	\$132/\$165

Jr. Combo

REC Center, Dance Studio - Activity #3601071

Combination classes include an introduction to formal ballet instruction along with 30 minutes of tap. Contractual Program provided by Dixon Dance Academy. (MJ)

No Class Date(s): 11/26

SECTION	AGE	DAY	DATE(S)	TIME	FEE R/NR
01	9-12	Tu	Sept. 10 - Dec. 3	5:45-6:45p	\$132/\$165

Dance with Me

REC Center, Oak Room - Activity #3601080

Young students with one participating adult will be introduced to stretches balance, basic dance movements and rhythm in this course while motor development is promoted. This class will not participate in the spring recital. Contractual Program provided by Dixon Dance Academy. (MJ)

No Class Date(s): 11/25, 11/27

SECTION	AGE	DAY	DATE(S)	TIME	FEE R/NR
01	1.5-3	M	Sept. 9 - Dec. 2	10:45-11:15a	\$108/\$135
02	1.5-3	W	Sept. 11 - Dec. 4	5:00-5:30p	\$108/\$135

Adult Barre

REC Center, Dance Studio - Activity #3601091

Total body barre is a total body, high energy class that melds elements of Pilates, ballet and strength training into a fun, action packed class. Be prepared to sweat and have fun! Contractual Program provided by Dixon Dance Academy. (MJ)

No Class Date(s): 11/27

SECTION	AGE	DAY	DATE(S)	TIME	FEE R/NR
01	18+	W	Sept. 11 - Dec. 4	7:00-8:00p	\$132/\$165

THEATER

It's Showtime of Huntley

Huntley Park District offers a community theater production program presented by It's Showtime of Huntley. It's Showtime of Huntley is a unique volunteer-driven theater troupe that is led by the Theater Advisory Committee and Huntley Park District staff.

Get Involved!

As a community theater group, we thrive when talented members of our community lend a hand! We are always searching for passionate individuals to assist with set design, props, and more! You can find open volunteer positions at huntleyparks.org.

Magical Musicals & Pixie Dust Musical Revue

Showtimes are Friday and Saturday August 23 and 24 at 7:30p. There will also be a Sunday, August 25 matinee at 2:00p. Tickets can be purchased in advance on our website. If not already sold out, tickets will also be available in person the day of the show.

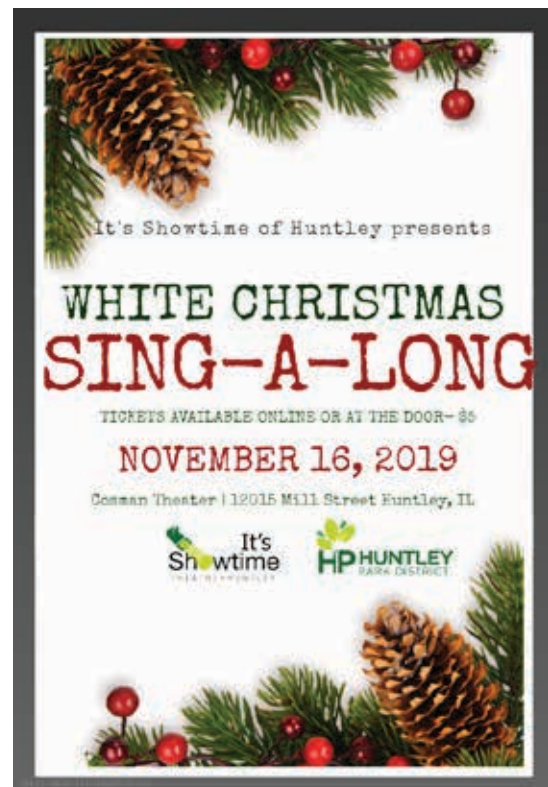
Acting Essentials

REC Center, North Classroom - Activity #3607020

Are you new to acting? Do you love acting, but want to brush up on your skills? Join us this summer as we offer acting classes through the Huntley Park District. In four classes, participants learn the basic principles of acting, developing authentic characters, and practice audition techniques. Instructor Jeff Cook. (SP)

No Class Date(s): 9/5

SECTION	AGE	DAY	DATE(S)	TIME	FEE R/NR
01	14-18	Th	Aug. 15 - Sept. 12	6:30-7:30p	\$48/\$60
02	19+	Th	Aug. 15 - Sept. 12	7:30-8:30p	\$48/\$60





Shotokan: Pre-Karate Safety

REC Center, Theater - Activity #3551010

In our Pre-Karate Safety classes, young children develop flexibility, strength, and coordination in fun, yet disciplined activities. This program is specifically designed for growing minds and bodies to enhance memory and agility. Watch your child's confidence blossom and their skills improve. Ages 4-7. (MS)

No Class Date(s): 9/21

SECTION	LEVEL	DAY	DATE	TIME	FEE R/NR
01	Beg/Cont	M	Sept. 9 - Dec. 16	4:30-5:15p	\$161/\$242
02	Beg/Cont	Sa	Sept. 14 - Dec. 21	9:00-9:45a	\$151/\$227
03	Int/Adv	M	Sept. 9 - Dec. 16	5:20-6:05p	\$161/\$242
04	Int/Adv	Sa	Sept. 14 - Dec. 21	9:50-10:35a	\$151/\$227

Shotokan Karate: Youth

REC Center, Theater - Activity #3551020

Youth Karate classes will put children in touch with their bodies and offers a good mix of strength training, with cardiovascular and flexibility exercises. Children increase their coordination, agility and poise, as well as learn lasting personal safety skills. They also benefit from the mental stimulation of learning the choreographed moves of the kata and the discipline of conforming to the class rules. *Please note that the Youth and Adult classes will train together. Ages 8-17. (MS)

No Class Date(s): 9/21

SECTION	LEVEL	DAY	DATE(S)	TIME	FEE R/NR
01	White - Yellow	M	Sept. 9 - Dec. 16	6:10-7:05p	\$161/\$242
02	White - Red	Sa	Sept. 14 - Dec. 21	10:40-11:40a	\$151/\$227
03	Blue - High Purp	M	Sept. 9 - Dec. 16	7:10-8:05p	\$161/\$242
04	Orange - Blue	Sa	Sept. 14 - Dec. 21	11:45a-12:45p	\$151/\$227
05	Brown & Up	M	Sept. 9 - Dec. 16	8:10-9:25p	\$188/\$282
06	Green & Up	Sa	Sept. 14 - Dec. 21	12:45-1:45p	\$151/\$227



Shotokan Karate: Adult

REC Center, Theater - Activity #3551030

Our adult classes release tension, develop total body fitness and build stamina and overall productivity! In addition to self-defense skills, karate increases flexibility, cardiovascular endurance, and muscle tone, while improving core strength. *Please note that the Adult and Youth classes will train together. Ages 18+. (MS)

No Class Date(s): 9/21

SECTION	LEVEL	DAY	DATE(S)	TIME	FEE R/NR
01	White - Yellow	M	Sept. 9 - Dec. 16	6:10-7:05p	\$161/\$242
02	White - Red	Sa	Sept. 14 - Dec. 21	10:40-11:40a	\$151/\$227
03	Blue - High Purp	M	Sept. 9 - Dec. 16	7:10-8:05p	\$161/\$242
04	Orange - Blue	Sa	Sept. 14 - Dec. 21	11:45a-12:45p	\$151/\$227
05	Brown & Up	M	Sept. 9 - Dec. 16	8:10-9:25p	\$188/\$282
06	Green & Up	Sa	Sept. 14 - Dec. 21	12:45-1:45p	\$151/\$227

KiMudo

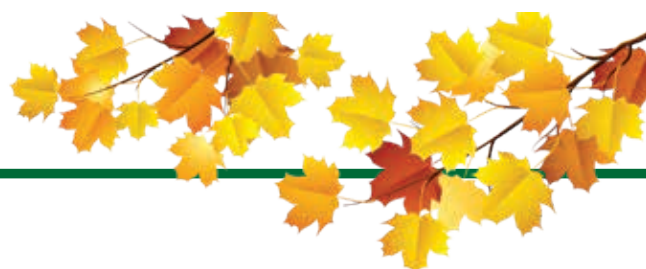
Deicke Park, Community Room - Activity #3552010

KiMudo is a modern mixed martial art with traditional values. Come join a fun, family friendly class where you will learn respect, self-control, patience, and persistence, all while gaining greater self-confidence! All levels of ability and martial arts styles are welcome!

*If registered participant has additional family member(s) registering for this program, a \$5.00 resident/\$7.00 non-resident discount will be administered to each additional participant. (MS)

No Class Date(s): 9/21, 11/28

SECTION	AGE	DAY	DATE(S)	TIME	FEE R/NR
01	5-7	Sa	Sept. 7 - Oct. 26	10:15-11:00a	\$57/\$75
02	8-99	Tu	Sept. 3 - Oct. 22	6:30-8:00p	\$65/\$85
03	8-99	Th	Sept. 5 - Oct. 24	6:30-8:00p	\$65/\$85
04	8-99	Sa	Sept. 7 - Oct. 26	8:30-10:00a	\$57/\$75
05	5-7	Sa	Nov. 2 - Dec. 21	10:15-11:00a	\$65/\$85
06	8-99	Tu	Oct. 29 - Dec. 17	6:30-8:00p	\$65/\$85
07	8-99	Th	Nov. 7 - Dec. 19	6:30-8:00p	\$49/\$64
08	8-99	Sa	Nov. 2 - Dec. 21	8:30-10:00a	\$65/\$85



REC Center Rental Information

For information on rates and availability for all indoor facilities, please call Staci Fletter, (847) 669-3180 ext. 301 or staci@huntleyparks.org.

Cosman Theater

Rental space is available at the Cosman Theater for performances, recitals, seminars, and meetings. The state-of-the-art theater seats 288 people and has a 40' presidium. With convenient parking and easy access from major routes, the Cosman Cultural Theater is ideal for your event.

Meeting Rooms

The Huntley Park District REC Center has meeting rooms for small events such as business presentations, committee meetings, birthday parties, and wedding or baby showers. Prices vary according to size and rental hours.

Insurance Policy Requirement for Rentals

The following are general guidelines used to determine if insurance is required for reservation and/or rentals at the Huntley Park District. Insurance will be required for one or more of the following:

- Sport & Athletic Events
- Special Events, Celebrations, Festivals
- Music Concerts
- Company/Business Reserving Property or Renting Facilities
- Any Organized Group
- Large Groups/Parties of 100+ reserving or renting property
- Fundraisers
- Food Served/Prepared by Vendors or Caterers
- Public Demonstration/Rally
- Fireworks
- Carnivals or Rides/Apparatus

Rental Refunds

Refunds will only be granted with a minimum of two weeks notice.

Picnic Shelter Reservation

There are several shelters that the Park District has available for rent. Deicke Park has 4 shelters, Warrington Park has 1 shelter. Reservation forms must be completed and fee paid at time of reservation. Reservations can only be made in person at the REC Center or a request can be submitted online.

- All shelters have electricity.
- Warrington Shelter does not have a playground.
- No refunds in case of inclement weather.
- Refunds will only be granted with a minimum of a four week notice.
- Groups of over 150 must be reviewed by the Board of Commissioners.

Reservation Rates

Small Shelters

Lakeside, Martinez, Warrington

Large Shelters

Cole, Hilltop

Please call 847-669-3180 ext. 0 for additional information

**Rentals for 2020 will begin on
Monday, January 6th at 7:00am.**



Fall Hayrides and Campfire

Bring your family and friends, scout groups, team players and enjoy a hayride through Deicke and Betsey Warrington Parks. Activity includes a 30-minute hayride. Then, wrap up the evening toasting marshmallows and making s'mores. Parents and adults are needed to assist with the making of s'mores. Group will meet at the Hilltop Shelter located in Deicke Park. The hayrack can hold a maximum of 30 individuals. Cost is \$150 per group and a two-week notice is required. Please call (847) 669-3180 ext. 0 to reserve today.

Rides are from 6:00-8:00p on the following dates:

Fridays: August 30, September 27 and October 4, 11, 18, 25

Saturdays: September 7, 14, 28 and October 5, 12, 19, 26

Huntley Senior Citizen's Club

Enjoy some social activities and a monthly luncheon with the Huntley Senior Citizen's Club. You must be a member to attend the luncheons and the annual cost is \$10. Additional fees may be charged for the lunches and activities. The Club is open to anyone age 50 and up. Members will be asked to volunteer during luncheons. For additional information please contact Evelyn Likens at (847) 659-1588.

Bingo

Join in on the fun, win a prize, and enjoy a little breakfast. Bingo cards provided and games are varied so the fun never stops. Doors open at 9:00a and games are called from 9:30-11:00a. Donations are appreciated. Bingo is held the first Tuesday of every month. Upcoming dates are August 6, September 3, October 1, November 5, and December 3. Bingo is held in the Rec Center Cafeteria near the Mill St. entrance.

Special thanks to our sponsors: Eastgate Manor of Algonquin, Heartland Bank & Trust, Heritage Woods of Huntley, 1st National Bank, Visiting Angels, Clarendale of Algonquin.

Senior Volleyball

REC Center, Gym North - Activity #3052030

Join us for some good volleys, laughs, and great exercise! There's no pressure when this group plays, just great fun and great atmosphere! There is a \$5 drop in fee. Skip days 10/10 & 11/22. (RC)

No Class Date(s): 9/20, 11/28

SECTION	AGE	DAY	DATE(S)	TIME	FEE R/NR
01	55+	Tu&Th	Oct. 1 - Dec. 19	8:00-10:30a	\$25/\$32

Pickleball

REC Center, Gym Full - Activity #3052040

We offer specific court designation times for beginning and advanced play. The courts on the south side of the gym curtain will be designated for beginning players on Thursday afternoons and for advanced players on Friday afternoons. All other courts and times will continue on as open drop-in play. Players are responsible for self-classification as to whether they are a beginning, intermediate, or advanced level player. If six or fewer players at the designated level are present at the start time on these days, only one court will be designated to that level. (RC)

No Class Date(s): 11/28

8:00a-11:00a only: 9/27, 10/14, 11/25, 11/27

SECTION	AGE	DAY	DATE(S)	TIME	FEE R/NR
01	18+	M,W,F	Sept. 3 - Dec. 20	8:00a-2:00p	\$48/\$60
		T, TH	Sept. 3 - Dec. 19	1:00p-3:00p	

Adult Drop-In Basketball

Drop in play is held at the REC Center gym. Players must be age 18 and older. Daily drop in fee of \$5 for resident and \$10 for non-residents. If you join the Fitness Center you can work out and play basketball for free. Play is Mondays 7:15-9:00pm. Please note that schedule may change. Any questions on availability please give us a call. Gym is not available on 9/3, 10/8, 11/12. (RC)

Adult Drop-In Volleyball

Drop-in play is held at the REC Center gym. Players must be age 18 and older. Daily drop-in fee of \$5.00 or Fitness Center Members can play for free. Play is on Wednesdays 7:15-9:00pm. Any questions on availability please give us a call. No Volleyball is not available 9/19, 10/23 or 11/27 (RC).

See page 17 for Adult Basketball

Jelly Belly, Apple Holler & Mars Cheese House

REC Center, Main Entrance - Activity #3054011

Come with us to tour the Jelly Belly factory where you will learn how the jelly beans are made, the history of Jelly Belly along with a good sampling of beans. Then, we travel to Apple Holler for lunch, apple picking and shopping. Lunch will be either a chicken or turkey dinner with all the fixings. It will include a drink of soda or tea and of course their famous apple pie w/ice cream. After lunch you can go apple picking to receive a 1/4 bunch of apples and then cruise their shops. Once we leave there our last stop will be the Mars Cheese House. I hope you come hungry because there is so much to explore and eat! Registration deadline: September 18 (space permitting). Transportation provided via Park District van/bus. Moderate walking. (HM)

SECTION	AGE	DAY	DATE(S)	TIME	FEE R/NR
01	18+	W	Oct. 2	7:15a-4:45p	\$56/\$61

Shipshewana, IN - Amish Country

REC Center, Lobby Main Entrance - Activity #3054012

Head over to Shipshewana via motor coach for a memorable experience visiting the heart of Amish Country. Our escorted tour offers personal details of growing up in such a unique area. The tour begins with a 15 minute Amish Buggy ride in downtown Shipshewana. Following the ride, we will visit a buggy shop where we will learn how they make the buggies and the differences in them. We will then stop at a popcorn farm/stand to learn about this farm and get a taste of their very own popcorn. We will also visit the Amish Bakery for free samples of their famous donuts and time to shop. If we have time, we will also stop at an authentic Amish furniture store. Our final stop will be at an Amish home where they will prepare a traditional thresher meal for us. None of us will leave hungry! Don't miss out on this memorable experience! Registration deadline: September 26th (space permitting). Moderate walking. Transportation by Park District van/bus to Barrington to catch the motor coach. (HM)

SECTION	AGE	DAY	DATE(S)	TIME	FEE R/NR
01	18+	Th	Oct. 17	5:15a-6:30p	\$99/\$104



Four Winds Casino

REC Center, Main Entrance - Activity #3054010

At Four Winds New Buffalo, the excitement never stops. Whether you like to play penny slots or \$100 machines, you'll find more than 2,600 of your favorite slot machines including some of the area's biggest jackpots with progressives starting at \$100,000! If table games are more your style Four Winds has you covered! Get a piece of the action at one of their 49 table games including: Blackjack, Poker, Roulette, Baccarat and Pai Gow! Each person receives \$15.00 Instant Slot Credit and up to \$10.00 Food Credit that can be used at the following: The Buffet, Timbers Fast Food & Deli or the Hard Rock Cafe. Motor coach transportation is provided and departs from the Huntley Park District REC Center. Registration deadline is Tuesday, September 3 or until program is full. (HM)

SECTION	AGE	DAY	DATE(S)	TIME	FEE R/NR
01	18+	Tu	Sept. 17	7:30a-5:00p	\$46/\$51

Driehaus Museum & Eataly Chicago

REC Center, Lobby Main Entrance - Activity #3054013

The Richard H. Driehaus Museum explores the art, architecture, and design of the late 19th and early 20th centuries with a focus on the Gilded Age. The Museum is located just steps from the Magnificent Mile within the meticulously restored Nickerson Mansion, renowned as Gilded Age Chicago's "Marble Palace." It's outstanding collection of decorative art is a must see. We will take a guided tour through the museum and then travel to Eataly where we will sample the creations of Lidia Bastianich a critically-acclaimed chef, restaurateur, author, TV personality and Eataly USA partner, so come hungry. Registration deadline: October 30 (spaces permitting). Transportation provided via Park District van/bus to Barrington where we will catch the motor coach. Moderate walking. (HM)

SECTION	AGE	DAY	DATE(S)	TIME	FEE R/NR
01	18+	W	Nov. 13	7:00a-5:00p	\$94/\$99

Devil in the White City & Lunch at Fado Irish Pub

REC Center, Lobby Main Entrance - Activity #3054014

This tour delves into the history, mystery, murder and mayhem of the American serial killer, H.H. Holmes and the World's Columbia Exposition in Chicago in 1893. During the World's Fair, Holmes operated the infamous "Murder Castle" and this was the first tour to take you on a journey back in time to not only the places where Holmes sought out and dispatched his victims, but also to take a look at the remnants of the World's Columbian Exposition and to get an inside look at Chicago in 1893 and what the world saw when it came to the Windy City! After the tour we will enjoy lunch at Fado Irish Pub. Motor coach transportation is provided and departs from the Huntley Park District REC Center. Registration deadline is Tuesday, October 15. (HM)

SECTION	AGE	DAY	DATE(S)	TIME	FEE R/NR
01	18+	Tu	Oct. 29	7:00a-5:00p	\$86/\$91

Wreath Factory & Cedarburg Shopping

REC Center, Lobby Main Entrance - Activity #3054015

Take a trip to the Wreath Factory in Plymouth, Wisconsin. Decorate your very own 24" holiday wreath, which will be neatly wrapped and tagged for transportation home. Then shop at the unique Christmas store, and save 10% on any in-store purchase. Next, enjoy a box lunch as we travel to Cedarburg. Once there, spend free time holiday shopping at the many quaint stores in the historic downtown area. Don't miss the Cedarburg Settlement and Cedar Creek Winery! For lunch, choose from ham & cheddar sandwich or turkey & provolone sandwich. All box lunches include carrots & ranch, kettle chips, cookie and water. Registration deadline: October 7 (space permitting). Transportation via Park District van/bus. (HM)

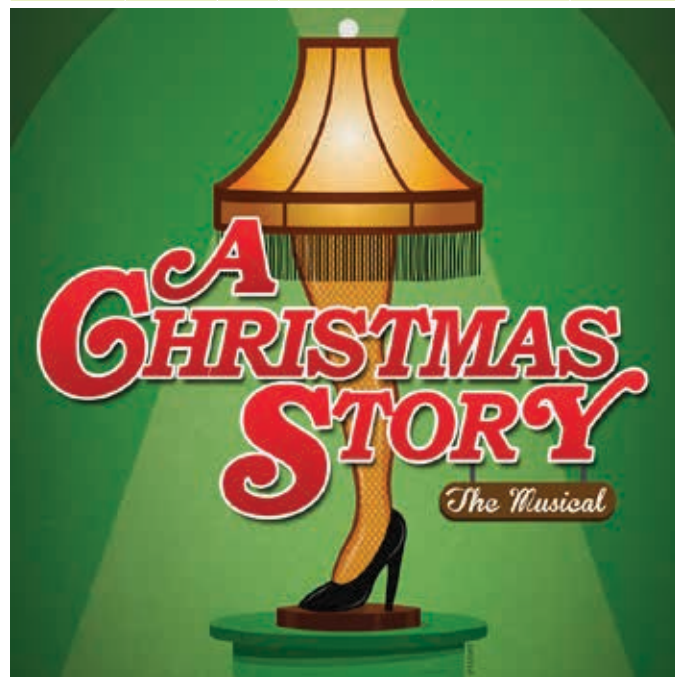
SECTION	AGE	DAY	DATE(S)	TIME	FEE R/NR
01	18+	Th	Nov. 21	8:00a-6:30p	\$85/\$90

The Fireside: A Christmas Story

REC Center, Lobby Main Entrance - Activity #3054016

Join us for a witty holiday show at The Fireside Theatre in Janesville, WI. The story is of Ralphie who wants only one thing for Christmas: An Official Red Ryder Carbine-Action 200-shot Range Model Air Rifle. Based on the classic 1983 movie that has become a holiday tradition that millions wait for every year, A Christmas Story: The Musical captures holiday wonder with such deliciously wicked wit that it is sure to delight all ages. Enjoy lunch before the show: tomato bisque, freshly baked breads, beef short ribs and chicken cordon bleu served with scalloped potatoes and spaghetti squash, and gingerbread frozen custard pie, along with coffee, tea and milk. Before or after dining, browse the charming specialty shops. Transportation via Park District van/bus. Registration deadline: November 6 (space permitting). (HM)

SECTION	AGE	DAY	DATE(S)	TIME	FEE R/NR
01	18+	W	Dec. 4	9:00a-5:00p	\$99/\$104

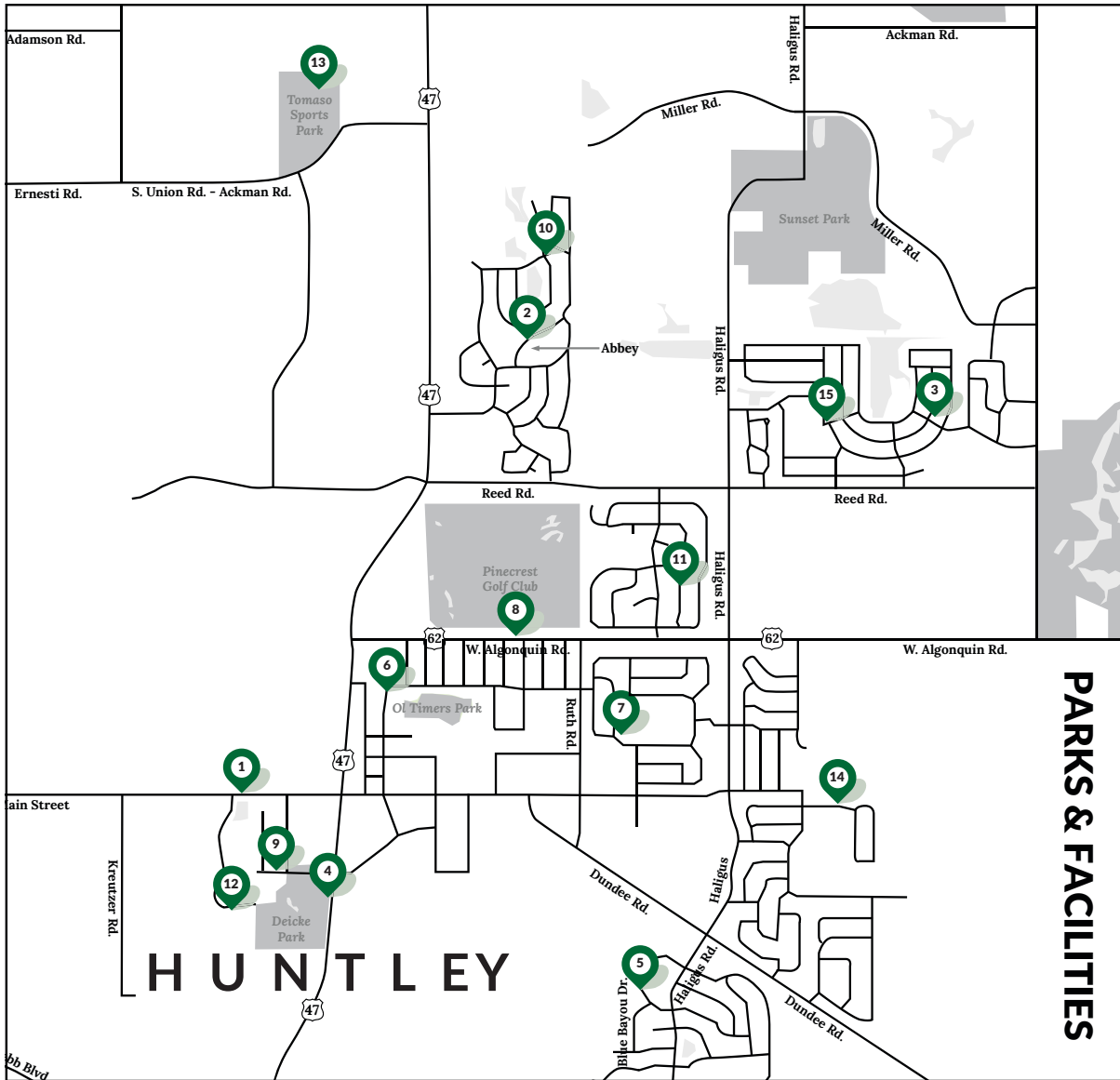


Little Traveler shopping, Tea & Mooseheart Holiday Light Show-Geneva/Mooseheart, IL

REC Center, Lobby Main Entrance - Activity #3054017

Enjoy a holiday shopping trip to the Little Travelers in the heart of Geneva, IL. At 2pm we will have English Tea in the Atrium of the Little Traveler with a traditional three course English Tea complete with scones and a selection of teas. Following our shopping and tea, we will visit the spectacular holiday light show at Mooseheart in Mooseheart, IL. The light show is a mile and a half of holiday lights that we drive through to help get you in the holiday spirit. Transportation by Park District van/bus. Registration deadline is December 1st (spaces permitting). Minimum walking. (HM)

SECTION	AGE	DAY	DATE(S)	TIME	FEE R/NR
01	18+	Tu	Dec. 10	11:00a-7:00p	\$29/\$34



		Acreage	Banquet Facilities	Baseball/Softball Field	Basketball Court	Bike Path/Trails	Concessions	Fishing	Pro-Shop/Range/Restaurant	Indoor Programs	Nature Area	Open Fields	Picnic Shelter	Playground	Pond	Restrooms*	Sand Volleyball	Sled Hill	Skate Park	Soccer Fields
1. Betsey Warrington Park: 12209 West Main St.	62		■			■					■	■	■		■	P				■
2. Borhart Park: 9661 Abbey Rd.	5.8		■	■	■							■	■	■		P				■
3. Cottontail Park: Bedford Dr. & Bordeaux Dr.	1.1											■	■	■	■					
4. Deicke Park: 11419 South Rt. 47	24.5		■	■	■		■				■	■	■	■	■	F	■			
5. Kiley Park: 11745 Blue Bayou	9.6			■	■						■	■	■	■		P	■			■
6. Ol' Timers Park: 10700 Church St.	16.5		■		■						■	■	■	■		P	■			■
7. Parisek Park: 10881 Allegheny Pass	4.2				■							■	■	■		F				
8. Pinecrest Golf Club: 11220 Algonquin Rd.	130	■							■							F				
9. REC Center: 12015 Mill St.	9	■		■					■							F				
10. Red Hawk's Rest: Edinburgh Ln./Covington Lakes	1				■						■	■								
11. Ruth Family Park: 10370 Aldridge Dr.	4.6		■	■	■							■	■	■		P				■
12. Stingray Bay Family Aquatic Ctr.: 12219 Lois Ln.	---						■									F		■		
13. Tomaso Sports Park: 11950 Ackman Rd.	38		■		■							■	■	■		F				■
14. Tures Park: 10251 Fleetwood St.	10.4		■	■	■							■	■	■		P				■
15. Weiss Park: Bennington Dr. & York Rd.	4.6		■	■	■							■	■	■		F			■	

Park Rules and Regulations

For the enjoyment of all park users the following rules and regulations have been established for all Huntley Park District parks, playgrounds, open spaces, and sports field locations:

1. Weapons or traps are prohibited
2. Use of fireworks are prohibited
3. Damage of equipment, plants, or any other district property is prohibited
4. Use of district property for the operation of a business is prohibited without a permit (this includes organized sports activities).
5. Offering articles for sale without a permit is prohibited
6. Advertising is prohibited without a permit
7. Use of all flying devices (including drones) in public parks is prohibited
8. Vehicles are prohibited from entering park property with the exception of paved roads and designated parking areas. Parking on grass is prohibited unless otherwise posted.
9. Guests may not enter Park District property where a sign or notice is posted indicating that it is closed.
10. Disorderly conduct is prohibited
11. Possession or consumption of alcoholic beverages is prohibited unless otherwise posted and permitted. No person shall enter park district property intoxicated.
12. No person shall interfere with the duties of a Park District employee when engaged in any work or improvement or supervision of work upon Park District Property.
13. No person shall call or hold a public meeting without a permit
14. No person shall kill, wound, or attempt to trap any animal
15. Parks are open from dawn to dusk unless otherwise posted
16. All animals shall be on a leash in our parks. Owners must cleanup any waste created by their pets. No vicious or dangerous animal shall be permitted on Park District Property.
17. Littering is prohibited
18. Cooking fires are restricted to grills provided by the district
19. Speeding is prohibited above the posted speed limits
20. Groups or individuals must be permitted to use the park for any organized activities. Proof of insurance and indemnity to the Park District is also required.
21. Penalties - Violation of park ordinances may result fines as established by the Village of Huntley.
22. Fishing in district ponds is strictly catch and release. All applicable state license laws apply.
23. No swimming or boating
24. No amplified music
25. Run or jog on designated trails
26. Do not use equipment improperly when wet
27. All state & village laws apply in parks

For a complete list of all Park District Ordinances please visit our website.

Lightning Warning System

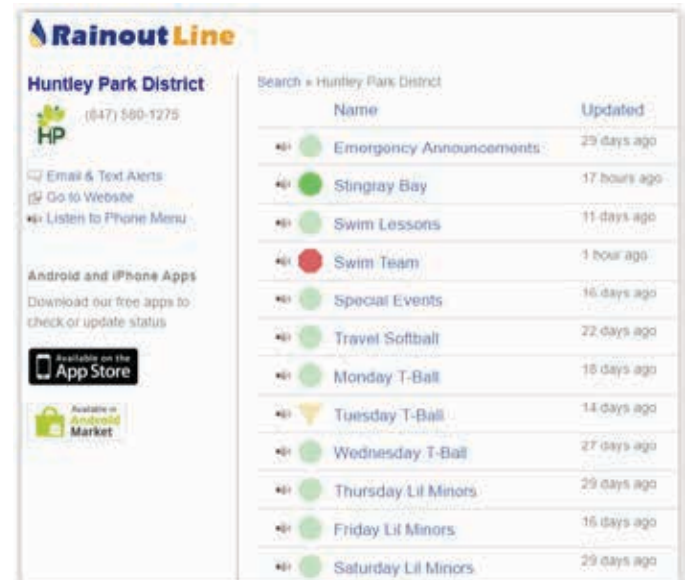
Huntley Park District has deployed a new lightning warning system this year at Stingray Bay/Deicke Park, Tomaso Sports Park, and the Public Works Soccer Fields. This system warns of actual lightning strikes within a 10-mile radius of the park. When lightning is detected, you will hear a 15-second blast and strobe lights will begin to flash on the unit at the park. When this occurs, ALL outdoor activities should cease, and all persons should seek shelter in a permanent building or vehicle immediately. Activities may only be resumed once the system has indicated the "all clear" with three - 5 second horn blasts and the strobe lights will stop flashing. There is a minimum period of 30 minutes if the system goes into alarm before it will be all clear.

Rainout Line

The Rainout Line is a platform used to communicate changes in programming due to weather. This is particularly important to outdoor sports programming, Stingray Bay activities, special events, and even Emergency Communications. You can simply search for "Rainout Line" in the app store of your mobile device. Once downloaded you can follow the directions to find Huntley Park District, setup up app alerts, and you can even setup text and/or email alerts to your favorite activities. All sports changes due to weather will be communicated here exclusively.

For those that prefer to call a weather hotline, an updated message is also generated through the system any time a status changes. You can call (847) 580-1275 to hear the current status.

To check out this great new feature please visit the Huntley Park District website and click on the small "weather" icon at the top of the page. Doing this from your mobile phone should prompt your device to download the app.





Pinecrest Golf Course

Pinecrest Golf Course is a full-service golf course, where guests can enjoy golf memberships, superb amenities, outstanding service and 18 holes of magnificent golf. Pinecrest also has a full-service pro shop to meet your last minute needs or to find the next set of clubs that is just right for you.

We offer exciting monthly golf events for groups of any size, including corporate tournaments and fundraising events. Please contact us today at (847) 669-3111 for your outing!

The Grille at Pinecrest

The Grille at Pinecrest is a great place for family and friends to gather for breakfast, lunch and dinner. The restaurant also has a full-service bar and is a great atmosphere to watch your favorite golf or other sporting event.



Weddings, Banquets and Meetings

Pinecrest is the ideal setting for your next wedding, banquet, event or party. We share your vision in creating the perfect celebration allowing you to sit back, relax and enjoy your special day. Pinecrest offers a picturesque setting for your wedding ceremony and celebration.

Pinecrest Restaurant and Banquets offer:

- Plated or buffet dinners
- Accommodates up to 180 guests
- Bar Options
- Bridal suite for privacy
- Elegant setting

We are also available for your wedding shower, birthdays, anniversaries and all other special occasions.

Corporate Meetings

Whether you are planning an executive board meeting, fundraiser, team building event, or conference our meticulous attention to detail makes Pinecrest the perfect choice for any function. Our Professional staff is experienced in creating a multitude of environments that suit individual needs, from appropriate seating arrangements to technical support and equipment.

Our on-site team of event professionals will gladly guide you through the process of creating a one-of-a-kind meeting or presentation that is sure to surpass all of your expectations.

Contact our Banquet and Event Manager today at 847-669-1400 ext. 26 to see how we can help you with your wedding, banquet, event, or corporate meeting.

PINECREST GOLF COURSE

HOST YOUR

HOLIDAY PARTY

AT PINECREST GOLF CLUB

NO ROOM FEE WITH \$750+ PURCHASE

NO ROOM FEE WITH \$1000+ PURCHASE PLUS UPGRADED BANQUET PACKAGE

VISIT PINECRESTHUNTLEY.COM

OR CALL 847.669.3111



LET US HOST YOUR 2020 GOLF OUTING AT

Pinecrest Golf Club

Book Now & Save!

48+ PLAYERS - \$100 SHOPPING SPREE
72+ PLAYERS - \$250 SHOPPING SPREE
100+ PLAYERS - \$500 SHOPPING SPREE



ESTABLISHED

2006

Fall Fest

HUNTLEY'S HOMETOWN FESTIVAL

SEPTEMBER 20 - 22, 2019
DEICKE PARK



SATURDAY: 9 PM



SATURDAY: 3:45 PM



FRIDAY: 9 PM



SATURDAY: 6:15 PM



SUNDAY: 2:15 PM



SUNDAY: 5 PM

FAMILY FUN ALL WEEKEND!

- * Car Show
- * Pancake Breakfast
- * Scarecrow Contest
- * Craft Show
- * Food
- * Beer & Mai Tai's
- * Petting Zoo
- * Pony Rides
- * Library Book Sale
- * Tractor Show
- * Straw Maze
- * Kids Stage
- * Magic Show
- * Stilt Walking
- * Scarecrow Building
- * Home Depot Kids Workshop
- * Model Train Display
- * Hayrides
- * Inflatables
- * Mobile Game Theater
- * Trackless Train Rides
- * 5K Race

SPECTACULAR FIREWORKS SATURDAY AT 8:45 PM

CARNIVAL MEGA PASS

Ride all three days from open to close with a Mega Pass!
\$60 PRESALE | \$75 AT THE FEST



HUNTLEYFALLFEST.COM



Huntley Park District
12015 Mill Street
Huntley, IL 60142

EVERY ISSUE IS
PRINTED WITH: 100% soy INK
 20% less waste

PRE-SORTED
STANDARD
US POSTAGE
PAID
PERMIT #126
ELGIN, IL

**ECRWSS
Postal Patron**

ARTISTIC DIRECTOR

Aaron Gomez

VOCAL DIRECTOR

Charlie Sommers

CHOREOGRAPHER

Shannon Lee Day

Magical Musicals & PIXIE DUST

PRESENTED BY:



**It's Showtime
Theatre of Huntley**

August 23, 24 & 25, 2019

Fri. & Sat. 7:30 P.M. • Sun. 2 P.M.

\$15 Students & Seniors • \$20 Adults

HUNTLEY PARK DISTRICT

12015 Mill Street • Huntley, IL 60142

huntleyparks.org • 847-669-3180